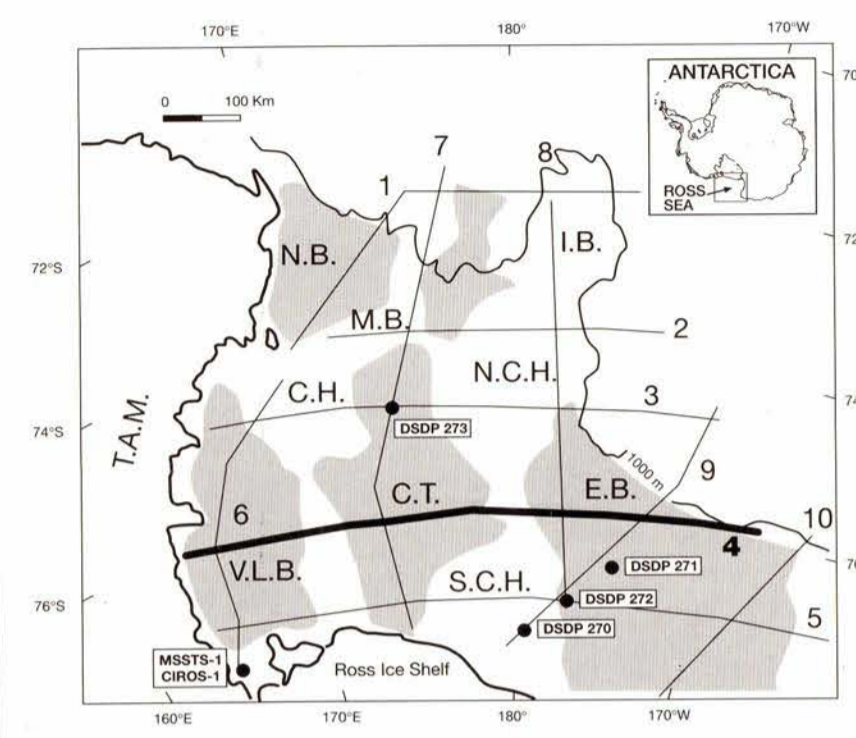


Seismic Stratigraphic Atlas of the Ross Sea, Antarctica

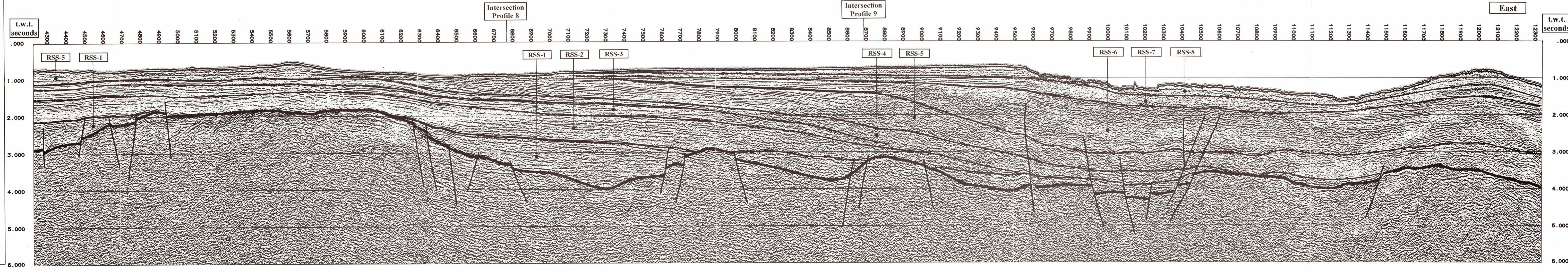
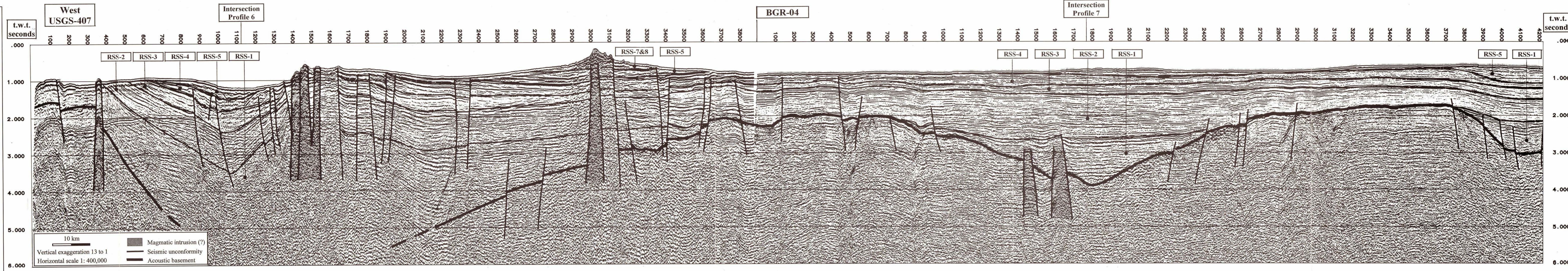
Seismic Profile 4



Legend:
Main structural basins
Drill site location

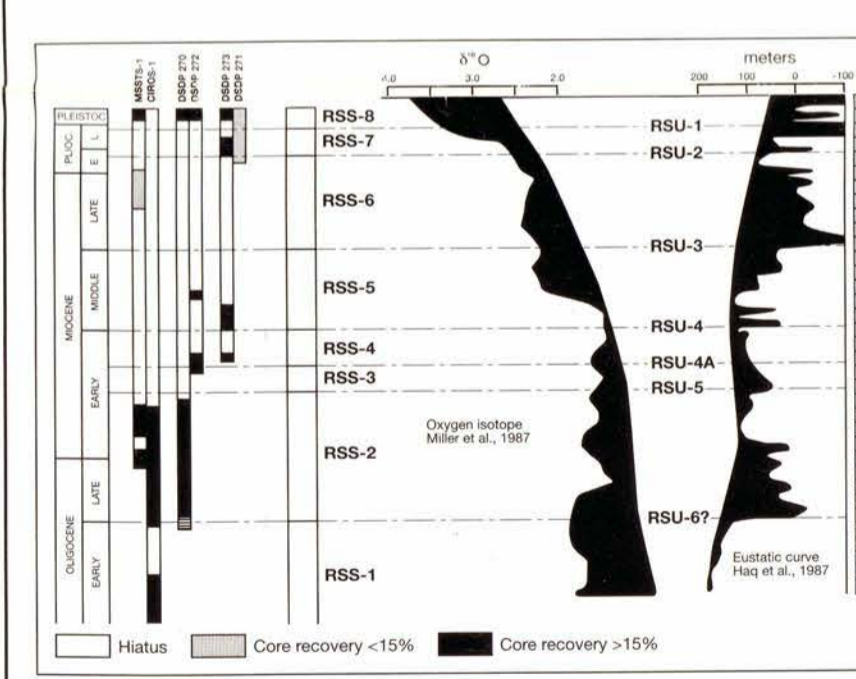
T.A.M.: Transantarctic Mountains, V.L.B.: Victoria Land basin, N.B.: Northern basin, M.B.: Mawson Bank, C.H.: Coulman high, C.T.: Central trough, I.B.: Iceland Bank, N.C.H.: northern Central high, S.C.H.: southern Central high, E.B.: Eastern basin. 1000 m water depth contour is shown.

Seismic line	Organization (Country)	Source	Receiver	Processing
USGS-407	USGS (USA)	Airgun array 20 liter	2400 m 24 channel	Unmigrated stack
BGR-04	BGR (Germany)	Airgun array 23.45 liter	2400 m 48 channel	Unmigrated stack



Correlation Chart of Ross Sea Seismic Sequences

From Brancolini et al. [this volume]



Compilers:
G. Brancolini, M. Busetti, L. De Santis (OGS),
I. Zayatz (MAGE), A. K. Cooper (USGS)

From ANTOSTRAT Project, Seismic Stratigraphic Atlas of the Ross Sea, Antarctica, in *Geology and Seismic Stratigraphy of the Antarctic Margin, Antarctic Research Series*, vol. 68, edited by A.K. Cooper, P.F. Barker, and G. Brancolini, AGU, Washington, D.C., 1995. See plate 2 for trackline position. See Atlas text for more information about the seismic profile and the ages of the seismic sequences.