



Seasonal and inter-annual variability of plankton chlorophyll and primary production in the Mediterranean Sea: a modelling approach

P. Lazzari¹, C. Solidoro¹, V. Ibello^{1,*}, S. Salon¹, A. Teruzzi¹, K. Béranger², S. Colella³, and A. Crise¹

¹Istituto Nazionale di Oceanografia e di Geofisica Sperimentale – OGS, Trieste, Italy

²École Nationale Supérieure de Techniques Avancées, ENSTA ParisTech, Palaiseau, France

³Centro Nazionale delle Ricerche, CNR ISAC UOS, Roma, Italy

* now at: Institute of Marine Sciences, Middle East Technical University, Erdemli, Turkey

Correspondence to: P. Lazzari (plazzari@ogs.trieste.it)

Received: 3 May 2011 – Published in Biogeosciences Discuss.: 1 June 2011

Revised: 16 November 2011 – Accepted: 14 December 2011 – Published: 11 January 2012

Abstract. This study presents a model of chlorophyll and primary production in the pelagic Mediterranean Sea. A 3-D-biogeochemical model (OPATM-BFM) was adopted to explore specific system characteristics and quantify dynamics of key biogeochemical variables over a 6 yr period, from 1999 to 2004. We show that, on a basin scale, the Mediterranean Sea is characterised by a high degree of spatial and temporal variability in terms of primary production and chlorophyll concentrations. On a spatial scale, important horizontal and vertical gradients have been observed. According to the simulations over a 6 yr period, the developed model correctly simulated the climatological features of deep chlorophyll maxima and chlorophyll west-east gradients, as well as the seasonal variability in the main offshore regions that were studied. The integrated net primary production highlights north-south gradients that differ from surface net primary production gradients and illustrates the importance of resolving spatial and temporal variations to calculate basin-wide budgets and their variability. According to the model, the western Mediterranean, in particular the Alboran Sea, can be considered mesotrophic, whereas the eastern Mediterranean is oligotrophic. During summer stratified period, notable differences between surface net primary production variability and the corresponding vertically integrated production rates have been identified, suggesting that care must be taken when inferring productivity in such systems from satellite observations alone. Finally, specific simulations that were designed to explore the role of external fluxes and light penetration were performed. The subsequent results show that the effects of atmospheric and terrestrial

nutrient loads on the total integrated net primary production account for less than 5 % of the its annual value, whereas an increase of 30 % in the light extinction factor impacts primary production by approximately 10 %.

1 Introduction

The qualitative and quantitative dynamics of biogeochemical properties in the open ocean are not well understood despite a growing awareness of their importance to ecosystem functioning and related goods and services on a planetary scale.

Monitoring programs are currently widespread in coastal areas but seldom cover open ocean waters, and they are principally devoted to the measurement of physical variables. Remote sensing observations provide valuable knowledge but primarily at the sea surface level. Research cruises enable scientists to explore ocean interior; however, these are limited to a few transects per year and often have inadequate sampling rates at seasonal or inter-annual time scales. Biogeochemical floats and gliders are not currently used in sustained observational programs.

As a result, we typically have a reasonable understanding of physical property dynamics, which are much easier to measure using remote and automated data collection systems. Conversely, we have less information regarding nutrient, chlorophyll and dissolved oxygen concentrations. Moreover, data on plankton primary production and other critical biological rates, at the basin scale, are sparse.

The use of validated models to reconstruct and explore the spatial and temporal dynamics of a property that cannot be readily measured at high frequency is already quite common in other fields, such as hydrology, and is now being increasingly applied in global ocean studies as well (Sarmiento and Gruber, 2006; Follows et al., 2007; Le Quéré et al., 2010). This is relevant despite the fact that, in these cases, it may not be possible to use strictly validated models (Arhonditsis and Brett, 2004). In principle, by optimally merging theoretical knowledge that is coded into a model with available experimental observations, data assimilation would provide insight into system functioning and properties where experimental observations are sparse.

In this article, we explore the spatial and temporal variability of chlorophyll concentrations and plankton primary production rates in the epipelagic open ocean waters of the Mediterranean Sea (MS hereafter) with a state-of-the-art numerical model that is constrained by satellite data. Model results provide useful information for developing a better understanding of MS trophodynamics and 3-D climatological descriptions of biogeochemical properties that could be useful as evidence-based support for regulations that are aimed at marine protection and conservation (such as the Marine Strategy Framework Directive) or as a comparison point for future studies and cross-site analyses. Annual budgets and temporal variability of chlorophyll concentrations and net primary production (NPP hereafter) are presented for different MS sub-basins and compared to previous studies.

2 Methods

2.1 The Mediterranean Sea

The MS is the largest semi-enclosed basin in the world. The Strait of Sicily separates the western and eastern sub-basins, which are shifted latitudinally, and can, in turn, be subdivided into several regional seas based on bathymetric and morphological considerations (Fig. 1). Physical processes create a dynamic and complex system in which mesoscale, thermohaline and wind driven circulations interact at different scales, resulting in a dominant west to east surface transport partially compensated by east to west transport at intermediate depths (Pinardi and Masetti, 2000).

The MS has long been considered one of the most oligotrophic areas in the world (Azov, 1991). Low primary production annual budgets have been estimated by several studies based on in situ measurements (i.e., Sournia, 1973; Robarts et al., 1996; Moutin and Raimbault, 2002). Ocean colour satellite analysis clearly indicates a decreasing west-east trophic gradient in productivity (Bosc et al., 2004; Volpe et al., 2007; Barale et al., 2008; D'Ortenzio and Ribera d'Alcalà, 2009), confirmed by (sparse) in situ measurements (Turley et al., 2000). Model analysis has indicated that this gradient is created by the superposition of physical dynamic

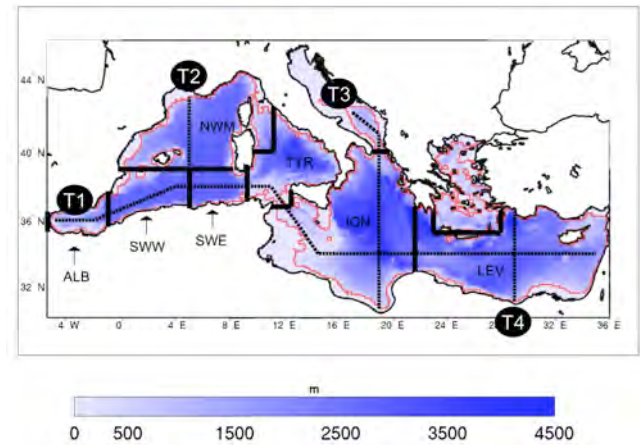


Fig. 1. Map of Mediterranean Sea bathymetry, with a-priori defined regions (delimited by solid black lines) and T1, T2, T3 and T4 transects (dashed black lines). ALB = Alboran Sea, SWW = South Western Mediterranean Sea (western side), SWE = South Western Mediterranean Sea (eastern side), NWM = North Western Mediterranean Sea, TYR = Tyrrhenian Sea, ION = Ionian Sea, LEV = Levantine basin. Red line indicates shallow water limits (depth < 200 m).

features and asymmetric distributions of nutrient sources and is maintained by biological pump activity (Crise et al., 1999, 2001). Satellite estimations have also demonstrated an analogous meridional trophic gradient from the north to the south (Siokou-Frangou et al., 2010). These spatial patterns are reflected in the location of the deep chlorophyll maximum (DCM), which is a quasi-permanent structure, except during the winter mixing period, characterised by a zonal gradient in terms of depth (shallower in the west and deeper in the east; Crispi et al., 1999; Siokou-Frangou et al., 2010). Despite its oligotrophic features, the MS maintains high levels of biodiversity (Bianchi and Morri, 2000; Coll et al., 2010) and some hot spots for fisheries (Caddy et al., 1995).

The lack of spatial-temporal coverage of in situ measurements does not allow for a direct estimate of the annual budget and temporal variability of NPP, except for specific sites, such as the DYFAMED station (Marty and Chiavérini, 2002) and other Long Term Ecological Research stations (Pugnetti et al., 2006). Therefore, there are large uncertainties in present estimates of NPP at the basin scale due to the sparsity of available observations (Sournia, 1973).

2.2 The numerical model

In this study we estimated the spatial and temporal variability of NPP rates and chlorophyll concentrations based on the outputs of the OPATM-BFM transport-reaction model. Its components are based on the OPA transport model (Foujols et al., 2000) and BFM model (Vichi et al., 2007a): these two physical and biogeochemical modules were originally

coupled in an operational tool for studying MS biogeochemistry (Lazzari et al., 2010) and are applied here, with several modifications.

The model solves a system of partial differential equations describing the temporal evolution of the concentration of a tracer c_i as:

$$\frac{\partial c_i}{\partial t} = A + D^V + S + R, \quad (1)$$

where A represents the advection term, D^V the vertical diffusion term, S the sinking term (only for particulates) and the reaction term R biological and chemical processes.

2.2.1 The transport terms

The physical dynamics that are coupled with biogeochemical processes are pre-computed by a high resolution ocean general circulation model (OGCM MED16). This circulation model supplies temporal evolution fields of horizontal and vertical current velocities; vertical eddy diffusivity; potential temperature; salinity, in addition to surface data for solar shortwave irradiance and wind stress. The associated transport terms (advection A , vertical diffusion D^V and sinking S , see Eq. (1)) are integrated off-line by a modified version of the OPA tracer model, version 8.1, on parallel machines via the method of domain decomposition, according to the equations presented in Appendix A. The off-line integration scheme implies that concentrations of biogeochemical properties (other than salt) do not significantly affect circulation, which is a reasonably safe assumption in the MS.

The dynamical model is called MED16, and is a regional configuration of the primitive-equation rigid-lid numerical model Ocean PARallel (OPA) (Madec et al., 1997) for the MS (Béranger et al., 2005). Its horizontal resolution is $1/16^\circ$ in longitude and $1/16^\circ \cos(\phi)$ in latitude (ϕ is the latitude), which corresponds to about 6 km, with 43 vertical levels on a stretched grid with layer thickness increasing from 6 m at the surface to 200 m at the bottom. The initial state of the simulation is the climatology MODB4 from Brankart and Bresseur (1998) in the MS and the climatology of Reynaud et al. (1998) in the Atlantic Ocean. A buffer zone is applied in the Atlantic domain. The horizontal eddy momentum and tracer diffusivity are parameterised by a bi-harmonic operator (coefficient equal to $-3 \times 10^9 \text{ m}^4 \text{ s}^{-2}$). The vertical diffusivity for tracers and momentum is modeled with the Turbulent Kinetic Energy closure scheme proposed by Blanke and Delecluse (1993). In case of vertical static instabilities, the vertical diffusivity is increased to a threshold value of $1 \text{ m}^2 \text{ s}^{-1}$. The mixed layer depth is diagnosed as the depth at which the vertical diffusivity coefficient corresponds to the threshold value taking care of vertical static instability.

Starting from rest, the MED16 model was forced by the reanalyzed fields from ERA40 (Uppala et al., 2005) from January 1989 to February 1998 period, and then by the ECMWF analyses from March 1998 to 2006. The net climatic heat fluxes,

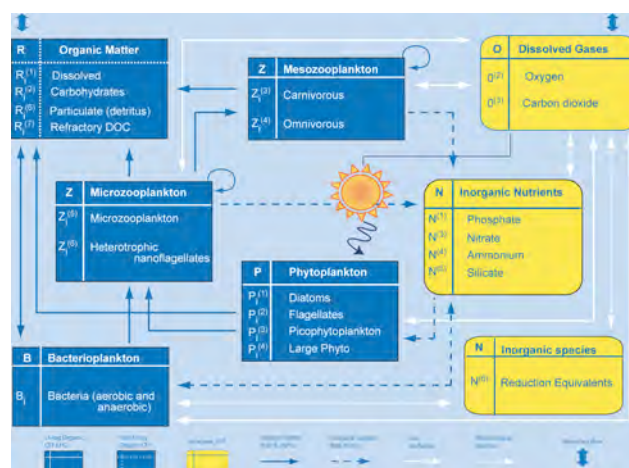


Fig. 2. Compartments and processes in the Biogeochemical Flux Model. Scheme modified from Vichi et al. (2007a), Copyright ©2006, with permission from Elsevier.

the Reynolds SST, the freshwater E-P flux and the wind stress are as described in Barnier (1998). Between March 1998 and October 2000, the resolution of ECMWF was 60 km, then increased to 40 km from November 2000 to 2006. The studied period (1999–2004) has been validated by Béranger et al. (2009, 2010) who showed that the MED16 model is able to reproduce winter convection events in the main areas of the MS.

2.2.2 The biogeochemical model

The biogeochemical model (corresponding to the reaction term R in Eq. (1)) is a modified version of the Biogeochemical Flux Model, BFM. This model describes dissolved and particulate organic and inorganic components as functions of temperature, salinity, irradiance level and other biogeochemical properties (Fig. 2). This model's complexity has been chosen considering the need to describe energy and material fluxes through both “classical food chain” and “microbial food web” pathways (Thingstad and Rassoulzadegan, 1995), and to take into account co-occurring effects of multi-nutrient interactions. Both of these factors are very important in the MS, wherein microbial activity fuels the trophodynamics of a large part of the system for much of the year and both phosphorus and nitrogen can play limiting roles (Krom et al., 1991; Béthoux et al., 1998).

The model presently includes nine plankton functional types (PFTs). Phytoplankton PFTs are diatoms, flagellates, picophytoplankton and dinoflagellates). Heterotrophic PFTs consists of carnivorous and omnivorous mesozooplankton, bacteria, heterotrophic nanoflagellates and microzooplankton. Each of these variables is described in terms of its carbon, phosphorus, nitrogen, and silicon compositions (see Fig. 2).

A detailed description of the BFM is given in Vichi et al. (2007a). In the version adopted here we modified the chlorophyll synthesis parameterisation, because several tests have shown that surface chlorophyll and NPP levels in the MS oligotrophic areas were higher than those identified via SeaWiFS satellite estimations and in situ primary production measurements. The introduction of a multi-nutrient (nitrogen and phosphorus) limitation in the chlorophyll synthesis equation has improved this situation. Furthermore, we have constrained the model dynamics with a satellite-based light extinction coefficient.

Following Geider et al. (1997), the BFM parameterisation describes gross primary production (gpp) in terms of PAR, temperature (both linearly interpolated in time from the MED16 outputs), carbon quota in plankton cells (C), chlorophyll content per unit of carbon biomass (θ), and silicate concentrations in the case of diatoms. In the previous BFM version, chlorophyll synthesis rate was proportional to the carbon synthesis rate which, in turn, is limited by internal nitrogen quotas. This formulation implies (as our tests indicated) that, in phosphorous-limited conditions the synthesis of carbon and chlorophyll are overestimated. In the BFM version used in this study, we included the effect of phosphorus limitation on carbon synthesis kinetics using a multi-nutrient limitation rule as proposed by Flynn (2001) involving both nitrogen and phosphorous and following the Liebig rule.

The revised formulation reads as shown in Appendix B, and the complete list of parameters that were used in our experiments is reported in the Supplement (part 2).

2.2.3 Constraining the model using satellite observations

Several test simulations have revealed that standard formulations for light extinction factors based on water absorption and plankton self-shading (Riley, 1975) do not adequately describe the observed light attenuation along the water column and the spatial differences in DCM depth between MS sub-basins. We have assumed that the water optical properties were not of the Yerlov “case I” type, owing to the presence of “yellow substances” (CDOM) that can increase the water’s absorption coefficient (Morel and Gentili, 2009). Because the dynamics of such substances cannot be modelled, we used a light extinction coefficient (k) that was derived from satellite observations. As a consequence, we implicitly included, albeit empirically, the effects of all dissolved and particulate matter. As shown in Fig. 3, k is space- and time-dependent: higher values are observed during the winter in the western Mediterranean area. The light model that was used to evaluate the photosynthetic available irradiance $I(z)$ at different depths (z) is based on the Lambert-Beer formulation:

$$I(z) = I(z_0)e^{-k(x,y,z,t)z} \quad (2)$$

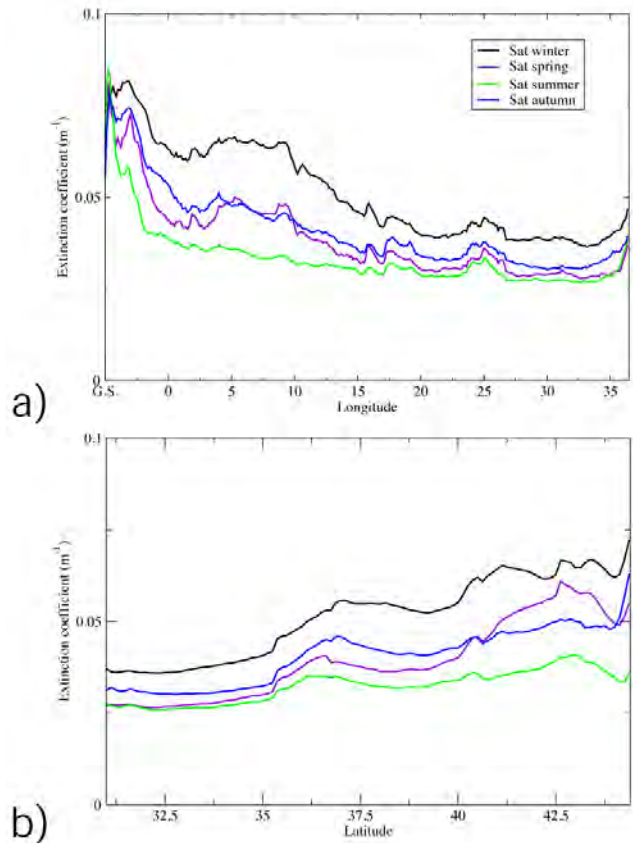


Fig. 3. Satellite extinction factor used in model simulations, zonal averages (upper panel) and meridional averages (lower panel), data provided by GOS-ISAC-CNR.

$$k(x, y, z, t) = k_{\text{sat}}(x, y, t), \quad (3)$$

where $I(z_0)$ is the irradiance at the surface level, and x , y and t are longitude, latitude and time, respectively. The light attenuation term (k) is derived from SeaWiFS data (k_{sat}) adopting the diffuse attenuation coefficient at 490 nm (K490; see the web reference at oceancolor.gsfc.nasa.gov); k_{sat} consists of seasonal climatological measurements over the 1998–2004 period, which were spatially interpolated onto the model grid with a 5-day temporal frequency.

It might be argued that, strictly speaking, the use of surface k_{sat} to determine k for the whole water column is not correct. However, the absolute error due to uncertainty in the rate of decay of k with depth is larger than the error due to the use of k_{sat} . Further, sensitivity analysis of the effect of varying k on the NPP is presented here.

2.2.4 The initial and boundary conditions in the numerical experiments

The nutrient pools (nitrate, phosphate, silicate) and dissolved oxygen for the BFM biogeochemical model were initialised

using vertical profiles from a retrospective reanalysis performed during the MFSTEP project using the MEDAR-MEDATLAS 2002 data set (Crise et al., 2003). The extracted data include measurements of dissolved oxygen (from 1948 to 2002), nitrate (from 1987 to 2002), phosphate (from 1987 to 2002) and silicate (1987 to 2002). A vertical nutrient profile was assigned to each of the eleven regions, as reported in Crise et al. (2003). The other biogeochemical state variables were homogeneously initialised in the photic layer (0–200 m) according to the standard BFM values and with lower values in the deeper layers. A smoothing algorithm was applied to manage the discontinuities between the different sub-domains.

A Newtonian dumping (D^N) term regulates the Atlantic buffer zone that is outside of the Strait of Gibraltar:

$$D^N = \frac{1}{\tau} (c_i^D - c_i^t) \quad (4)$$

where τ is the time scale of the relaxation, and the tracer concentration c_i is relaxed to the seasonally varying value c_i^D , which is derived from climatological MEDAR-MEDATLAS data (phosphate, nitrate, silicate, dissolved oxygen) measured outside Gibraltar.

Atmospheric deposition rates of inorganic nitrogen and phosphorus were set according to the synthesis proposed by Ribera d'Alcalà et al. (2003) and based on measurements of field data (Löye-Pilot et al., 1990; Guerzoni et al., 1999; Herut and Krom, 1996; Cornell et al., 1995; Bergametti et al., 1992). No distinction was made between dry and wet depositions, and all of the deposited nutrients were considered to be bio-available. Atmospheric deposition rates of nitrate and phosphate were assumed to be constant during the year, albeit with different values for the western (580 Kt N yr⁻¹ and 16 Kt P yr⁻¹) and eastern (558 Kt N yr⁻¹ and 21 Kt P yr⁻¹) sub-basins. The rates were calculated by averaging the “low” and “high” estimates reported by Ribera d'Alcalà et al. (2003).

Nutrient load from rivers and other coastal nutrient sources were set based on the reconstruction of the spatial and temporal water discharge variability estimated following the method described by Ludwig et al. (2009), with total nitrate and phosphate inputs of 826 Kt N yr⁻¹ and 25 Kt P yr⁻¹. These values are based on available field data for nutrient concentrations, climate parameters that have been available since the early 1960s, and on model results for areas that are not covered by the data. The nutrient discharge rates for the major rivers (Po, Rhone and Ebro) take into account seasonal variability on a monthly scale and are calculated on the basis of direct observations. All other inputs are treated as constants throughout the year due to a lack of associated data.

2.3 Experimental procedure

In this work we compare projections of three selected runs. These runs were all characterised by the same code configuration, forcing fields and initial conditions. The simulations

covered the period from 1999 to 2004, and the output files were stored on disk as 10-day averages. The integration time step was 1800 seconds. The reference numerical experiment OPATM-BFM REF (Table 1, column 1) was used in the results section to derive best estimates according to our knowledge of NPP and chlorophyll fields. The second simulation was configured with neither atmospheric nor terrestrial inputs (ATIs) to assess the impacts of these sources on model output. The third run was conducted to analyse the sensitivity of model output to an increase of the extinction coefficient k of 0.01 m⁻¹ (corresponding to 30 % of the minimum value of k) based on the fact that the satellite algorithm tends to underestimate extinction factors in oligotrophic areas (Psarra et al., 2000).

3 Results

In this section, we present model results for NPP rates and chlorophyll concentrations. Surface and vertically integrated distributions, both at the basin and sub-basin scales, and their evolution over seasonal and inter-annual time scales are presented. The NPP results are then compared to available measurements. To further corroborate the model, in situ data and satellite estimates of chlorophyll were compared to the corresponding model variables. Because their spatial and temporal resolutions are different, observed data and model results were compared using suitable aggregation methods. Shallow areas (depth < 200 m) and marginal seas were excluded from the statistics because the model was designed for pelagic areas.

Mixed layer plays a relevant role in regulating both spatially and temporarily the primary producers in the MS. Climatological mixed layer depth (MLD) simulated by the OGCM model shows a reduction in summer to values lower than 10 m depth, reaching 30 m depth in the south-eastern MS. In winter, MLD progressively increases, with values between 80 and 110 m depth in December, attaining its highest values in February in areas of dense water formation. This dynamics is in good agreement with the MLD estimates shown in Fig. 1 of D'Ortenzio et al. (2005), see Supplement (part 1).

3.1 Spatial and temporal chlorophyll variability

We evaluated climatological fields of chlorophyll concentration by averaging all of the outputs for the 1999–2004 period. The climatological spatial variability throughout the MS was presented considering variables distribution along four transects (Fig. 1) that had been chosen to provide a good representation of the chlorophyll vertical structure, as previously proposed by D'Ortenzio and Ribera d'Alcalà (2009).

In the Alboran Sea (Fig. 4a), the DCM was quite shallow, at an average depth of approximately 60 m, and the associated chlorophyll concentration was approximately

Table 1. Regional averages of net primary production presented as annual value and for shorter specific period selected on the basis of data availability. Data indicate typical mean and (for climatology only) related inter-annual variability, computed as mean and standard deviations of the six annual mean values, respectively. The average of the six standard deviations is reported in parentheses as the typical intra-period variability. References: (a) Crispi et al. (2002), (b) Allen et al. (2002), (c) Napolitano et al. (2000), (d) Colella (2006), (e) Sournia (1973), (f) Marty and Chiaverini (2002), (g) Boldrin et al. (2002), (h) Moutin and Raimbault (2002), (i) Macías et al. (2009), (j) Lohrenz et al. (2003), (k) Moran and Estrada (2001), (l) Granata et al. (2004), (m) Bosc et al. (2004), (n) Conan et al. (1998).

	Climatology/All seasonal cycle ($\text{gC m}^{-2} \text{yr}^{-1}$)					Specific periods ($\text{mgC m}^{-2} \text{d}^{-1}$)	
	OPATM-BFM REF	Other models	Satellite model ^(d)	Other satellite models	In situ	OPATM-BFM REF	In situ
Mediterranean (MED)	98 ± 5 (±82)	–	90 ± 3 (±48)	135 ^(m)	80–90 ^(e)	–	–
Western basin (WES)	131 ± 6 (±98)	120 ^(a)	112 ± 7 (±65)	163 ^(m)	–	430 (±258)	> 350 ^(h) (May–Jun)
Eastern basin (EAS)	76 ± 5 (±60)	56 ^(a)	76 ± 2 (±20)	121 ^(m)	–	200 (±107)	150–450 ^(h) (May–Jun)
Alboran Sea (ALB)	274 ± 11 (±155)	24–207 ^(b)	179 ± 13 (±116)	–	–	545 (±321)	6–644 ⁽ⁱ⁾ (Nov)
South West Med (SWW)	160 ± 8 (±89)	24–207 ^(b)	113 ± 6 (±43)	–	–	570 (±233)	299–1288 ^(j) (May)
South West Med (SWE)	118 ± 13 (±70)	–	102 ± 4 (±38)	–	–	447 (±164)	> 450 ^(h) (May–Jun)
North West Med (NWM)	116 ± 6 (±79)	32–273 ^(b)	115 ± 8 (±67)	–	86–232 ^(f) 140–150 ⁽ⁿ⁾	600 (±290)/ 142 (±96)	1000±11 ^(k) (Mar)/ 211–249 ^(l) (Oct)
Tyrrhenian (TYR)	92 ± 5 (±63)	–	90 ± 7 (±35)	–	–	279 (±118)	350–450 ^(h) (May–Jun)
Ionian (ION)	77 ± 4 (±58)	27–153 ^(b)	79 ± 2 (±23)	–	62 ^(g)	189 (±99)/ 159 (±68)	150–450 ^(h) (May–Jun)/ 186±65 ^(g) (Aug)
Levantine (LEV)	76 ± 5 (±61)	97 ^(c) / 36–158 ^(b)	72 ± 2 (±21)	–	–	208 (±110)	150–250 ^(h) (May–Jun)

0.25 mg chl-*a* m⁻³. The DCM was found at roughly the same depth from the Alboran Sea area up to the western part of the Algerian region (5° E, Fig. 4a, T1). In the south Ionian Sea and the Levantine region, the DCM was observed to occur at a quite uniform depth of approximately 110 m with average chlorophyll concentrations of approximately 0.1 mg chl-*a* m⁻³. The north-south transects, which cut across the western MS, the central MS and the Levantine (T2, T3 and T4 in Fig. 1), indicate a gradient with a shallower DCM in the northern reaches of the MS, wherein chlorophyll concentrations of approximately 0.15–0.25 mg chl-*a* m⁻³ were observed at a depth of 70 m in the western sub-basin (Fig. 4b, T2) and 0.10–0.15 mg chl-*a* m⁻³ were observed at a depth of 110 m in the Levantine region (Fig. 4b, T4). The DCM in the Ionian transect (T3, Fig. 4c) also follows a gradient with deeper values in the southern part.

The west-east DCM gradient that was observed by Turley et al. (2000; see their Table 2) and Moutin and Raimbault (2002; see their Table 1) in the period between May and June is another characteristic feature reproduced by the model.

We compare (Fig. 5) the average seasonal cycle in MLD and chlorophyll standing stocks obtained with the model output in a 1° box around the DYFAMED station and the DYFAMED station measurements for the period 1991–1999. Instead of monthly averages (as reported by Marty and Chiaverini, 2002) we considered monthly medians and inter-quartile ranges (Fig. 5b, c), because those are more appropriate indexes for non-normally distributed data. The analysis of the in situ data reveals that the seasonal cycle of chlorophyll biomass has complex dynamics and a high inter-annual variability. The accumulation of phytoplankton biomass begins with the deepening of the MLD and the maximum biomass is reached when MLD is deepest. This dynamics (clearly evident for the year 1998, Fig. 5a), is similar to observations by Behrenfeld (2010) for the North Atlantic and to results from our simulation. In Fig. 5b the temporal evolution of chlorophyll standing stocks shows a marked seasonal cycle with higher median values in mid-winter to spring (January to April). Highest accumulation rates based on the median values are found between January and March, in the

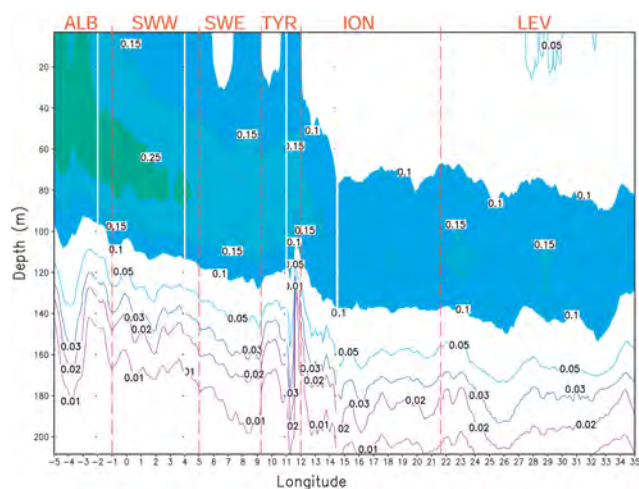


Fig. 4a. Vertical section of average chlorophyll ($\text{mg chl-}a \text{ m}^{-3}$) along the T1 zonal transect (see Fig. 1) from OPATM-BFM REF run averaged for the period 1999–2004. Crossing lines between transect T1 and regions are indicated by dashed red lines.

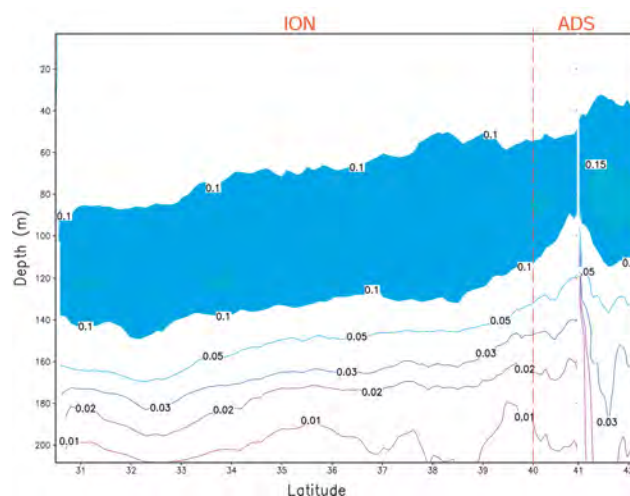


Fig. 4c. Vertical section of average chlorophyll ($\text{mg chl-}a \text{ m}^{-3}$) from OPATM-BFM REF run along the T3 meridional transect (see Fig. 1) for the period 1999–2004. Crossing lines between transect T3 and regions are indicated by dashed red lines.

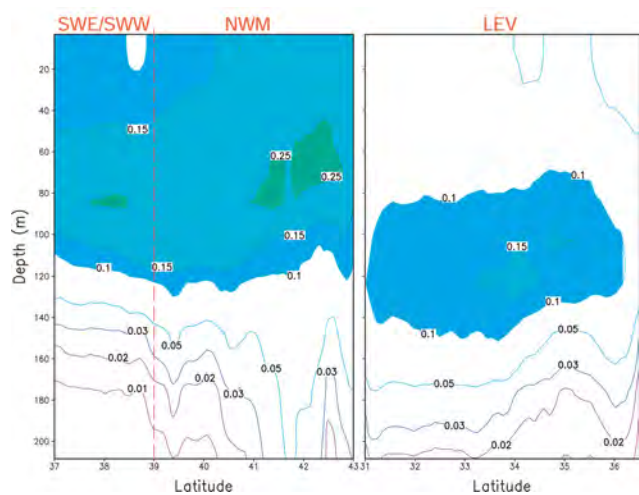


Fig. 4b. Vertical section of average chlorophyll ($\text{mg chl-}a \text{ m}^{-3}$) from OPATM-BFM REF run along the T2 (left) and T4 (right) meridional transects (see Fig. 1) for the 6-yr period 1999–2004. Crossing lines between transect T2 and regions are indicated by dashed red lines.

model run, with peak biomass in February both in LEV in model results and in situ. The inter-quartile range for March is larger in the DYFAMED site than in the model. The main discrepancy between data and model simulation is related to late bloom period (Fig. 5b): in April the model shows a fast decrease in concentration, whilst the data show higher concentrations. In the same period modeled MLD presents inter-quartile range values lower than those observed in the DYFAMED site (Fig. 5c).

The chlorophyll seasonal cycle that was described above for the DYFAMED station is consistent with the general

Table 2. Horizontal averages of vertically integrated net primary productions ($\text{gC m}^{-2} \text{ yr}^{-1}$) for selected model simulations. Data indicate typical mean and (for climatology only) related inter-annual variability, computed as mean and standard deviations of the six annual mean values, respectively. The average of the six standard deviations is reported in parentheses as the typical intra-period variability.

	OPATM-BFM REF	OPATM-BFM without ATI	OPATM-BFM REF ($k+0.01$)
Mediterranean (MED)	98 ± 5 (±82)	95 ± 4 (±85)	87 ± 7 (±74)
Western basin (WES)	131 ± 6 (±98)	127 ± 5 (±103)	120 ± 7 (±89)
Eastern basin (EAS)	76 ± 5 (±60)	73 ± 4 (±61)	64 ± 8 (±53)
Alboran Sea (ALB)	274 ± 11 (±155)	273 ± 12 (±129)	243 ± 7 (±137)
South West Med (SWW)	160 ± 8 (±89)	156 ± 7 (±91)	145 ± 6 (±79)
South West Med (SWE)	118 ± 13 (±70)	113 ± 12 (±71)	109 ± 12 (±66)
North West Med (NWM)	116 ± 6 (±79)	111 ± 6 (±84)	108 ± 7 (±75)
Tyrrhenian (TYR)	92 ± 5 (±63)	88 ± 5 (±66)	88 ± 6 (±62)
Ionian (ION)	77 ± 4 (±58)	74 ± 3 (±61)	68 ± 6 (±54)
Levantine (LEV)	76 ± 5 (±61)	73 ± 6 (±61)	60 ± 11 (±51)

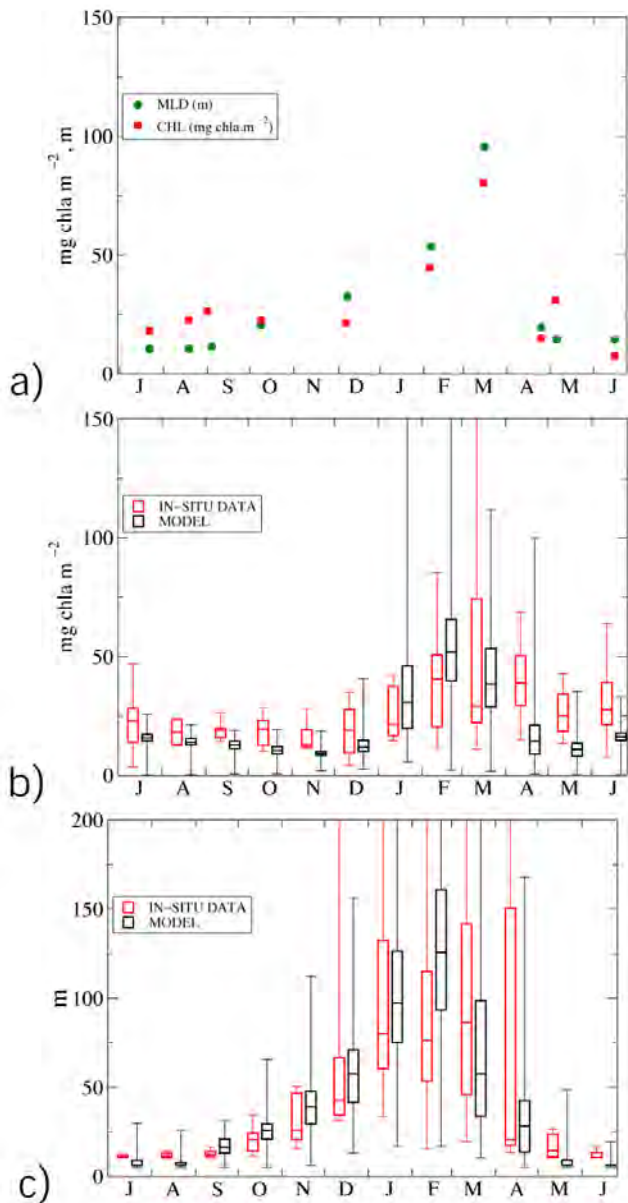


Fig. 5. (a) Seasonal cycle of integrated chlorophyll and mixed layer depth at DYFAMED station for the year 1998; (b) climatological seasonal cycle of integrated chlorophyll from in situ data and model results aggregated as monthly medians; (c) climatological seasonal cycle of mixed layer depth from in situ data and model results aggregated as monthly medians. In situ climatological data is derived from DYFAMED dataset for the period 1991–1999 (Marty and Chavièrini, 2002). Model outputs are monthly medians for the period 1999–2004 considering a 1 degree box centered on DYFAMED station position. Boxes values represent, from lower to higher values, minimum, 25th percentile, median, 75th percentile and maximum.

behaviour of the chlorophyll that was modelled in the NWM area in the model. This offers support to the hypothesis of Marty and Chiavèrini (2002), who argued that

the chlorophyll seasonal cycle that has been observed at the DYFAMED station is representative of a larger area in which open ocean processes drive the biotic dynamics of the ecosystem.

At the basin scale, the temporal and spatial variability of surface chlorophyll concentrations simulated by the model are compared to satellite results (Fig. 6). Regionally aggregated median values of modelled surface chlorophyll are compared to SeaWiFS level 4 composites that were reprocessed using a regional algorithm (Volpe et al., 2007) and interpolated onto the model grid. We applied the algorithm described in Vichi et al. (2007b) to compare model chlorophyll with surface observation.

A clear seasonal cycle is present in all of the regions with maximum values during February or March and minimum values in summer. This is also the period when the largest relative underestimation of the model is observed when compared to satellite data, which was typically lower than $0.05 \text{ mg chl-}a \text{ m}^{-3}$. In the NWM region in particular, the simulated spring bloom terminates one month earlier than observations. Such model behaviour may be related to the MLD dynamics shown in Fig. 5 for DYFAMED station, which is representative of the NWM region. Spatial differences in the range between 25th and 75th percentiles around the median value appear to be quite similar between the model and satellite data, as already observed in Lazzari et al. (2010) with the analyses done for the operational model.

The model skill in each region can be graphically summarised with a target diagram (Jolliff et al., 2009). This diagram (Fig. 7) reports on the x -axis the unbiased root mean square difference (RMSD') between model results and reference data, whereas the y -axis indicates the bias (B') with respect to the reference data (in this case satellite). Both axes are normalised based on the variance of the satellite data. We computed B' and RMSD' for the climatological seasonal cycle of each grid cell of the model with respect to the reference satellite grid cell (interpolated onto the model grid), and we collapsed each cloud of data by computing median values of B' and RMSD' for each region. Because RMSD' is intrinsically positive, the sign of the x -axis was used to indicate whether the model variance was higher ($x > 0$) or lower ($x < 0$) than the satellite variance. The model results and reference data perfectly agree for points that are plotted at the centre of the target. All of the western regions are inside of the unitary circle, which indicates a good agreement with observations. The eastern regions are outside of the unitary circle; however, in those areas, the absolute differences between model and data are very low due to the marked oligotrophic regime.

For all regions, B' is lower than 1, whereas RMSD' is positive for all regions with the exception of the NWM and SWE regions, wherein the temporal variance of the model is lower than that of the reference.

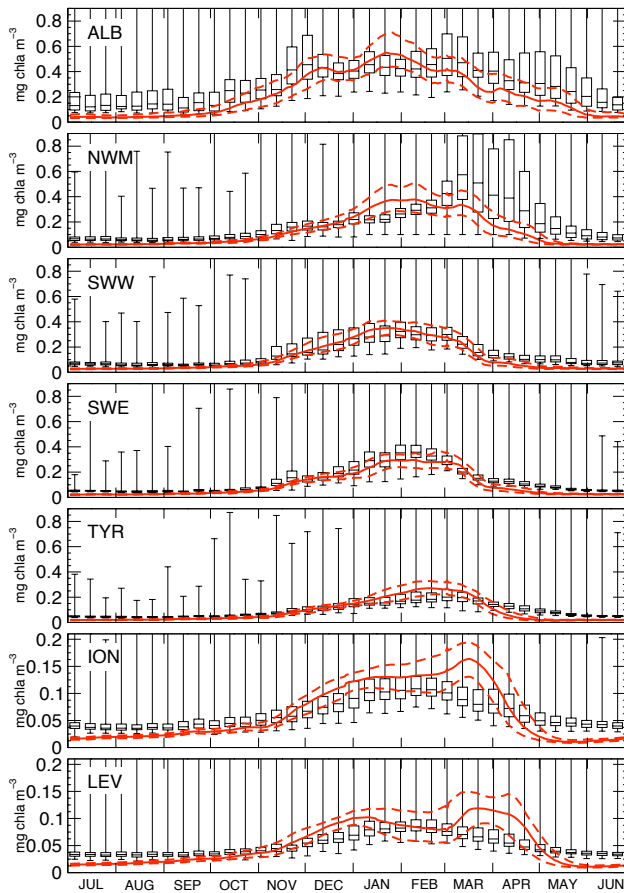


Fig. 6. Surface chlorophyll seasonal cycle ($\text{mg chl-}a \text{ m}^{-3}$) for the period 1999–2004 simulated by OPATM-BFM model (solid red lines = median, dashed red lines = 25 and 75 percentile) compared with data from SeaWiFS (box-plot). Data are spatially aggregated (spatial median) in regions corresponding to those presented in Fig. 1.

3.2 Net primary production

Climatological maps (1999–2004 period) of model-derived NPP and chlorophyll distribution (Fig. 8) show that surface chlorophyll, surface net primary production and vertically integrated NPP (int-NPP hereafter) differ, even though all these quantities show a west-east gradient.

The most productive pelagic areas, with respect to surface NPP, include the Alboran Sea and the NWM region, whereas the eastern Mediterranean (including the ION and LEV regions) is remarkably uniform.

The Alboran Sea production is correlated with the circulation patterns present in the area (see Supplement, part 1): vertical velocities enrich the surface Atlantic waters with nutrients that are subsequently advected horizontally through the gyres present in the area. The principal sites of vertical flux are located in the Gibraltar Strait and along the northern coast of the Alboran Sea. The north-south gradient of int-NPP in

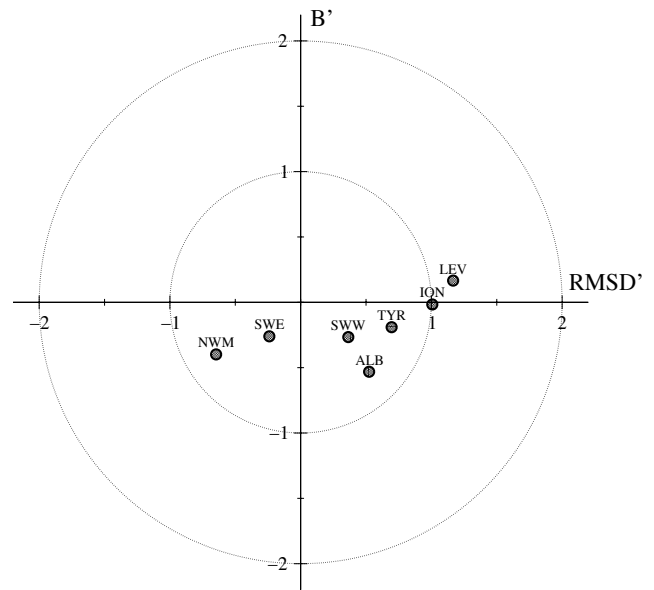


Fig. 7. Target diagram comparing model-derived seasonal cycle in surface chlorophyll concentrations with those derived from SeaWiFS for the different regions defined in Fig. 1. Each dot is the median of the temporal skill of each pixel for the specific regions described in Fig. 1.

the western basin is less evident than that for surface NPP, moreover a south-north int-NPP gradient can be observed in the Levantine region. A relative maximum of int-NPP rates appears along the south-western Sicilian coast, which can be ascribed to the persistent wind-driven upwelling events that are observed in this area (Béranger et al., 2004). The effects of riverine input on int-NPP values are very weak.

Table 1 shows annual int-NPP for several regions (simulated period 1999–2004) from model experiments and satellite estimates as well as in situ data.

The reference simulation OPATM-BFM REF has an average int-NPP value for the entire MS of $98 \pm 5 \text{ gC m}^{-2} \text{ yr}^{-1}$, which is slightly higher than the findings of Sourmia (1973), who reported an annual int-NPP of approximately $80\text{--}90 \text{ gC m}^{-2} \text{ yr}^{-1}$, based on in situ ^{14}C measurements, but lower than satellite estimates ranging between 90 (Colella, 2006) and $135 \text{ gC m}^{-2} \text{ yr}^{-1}$ (Bosc et al., 2004). Higher int-NPP values are found in the western sub-basin, $131 \pm 6 \text{ gC m}^{-2} \text{ yr}^{-1}$, whereas lower values, $76 \pm 5 \text{ gC m}^{-2} \text{ yr}^{-1}$, are found in the eastern sub-basin. Satellite-based estimates give values of 112 and $163 \text{ gC m}^{-2} \text{ yr}^{-1}$ in the western sub-basin (Colella, 2006; Bosc et al., 2004, respectively) and values of 76 and $121 \text{ gC m}^{-2} \text{ yr}^{-1}$ in the eastern sub-basin (Colella, 2006; Bosc et al., 2004, respectively). Crispi et al. (2002) used a 3-D model to estimate an int-NPP rate of $120 \text{ gC m}^{-2} \text{ yr}^{-1}$ for the western sub-basin and $56 \text{ gC m}^{-2} \text{ yr}^{-1}$ for the eastern sub-basin. Moutin and Raimbault (2002) have

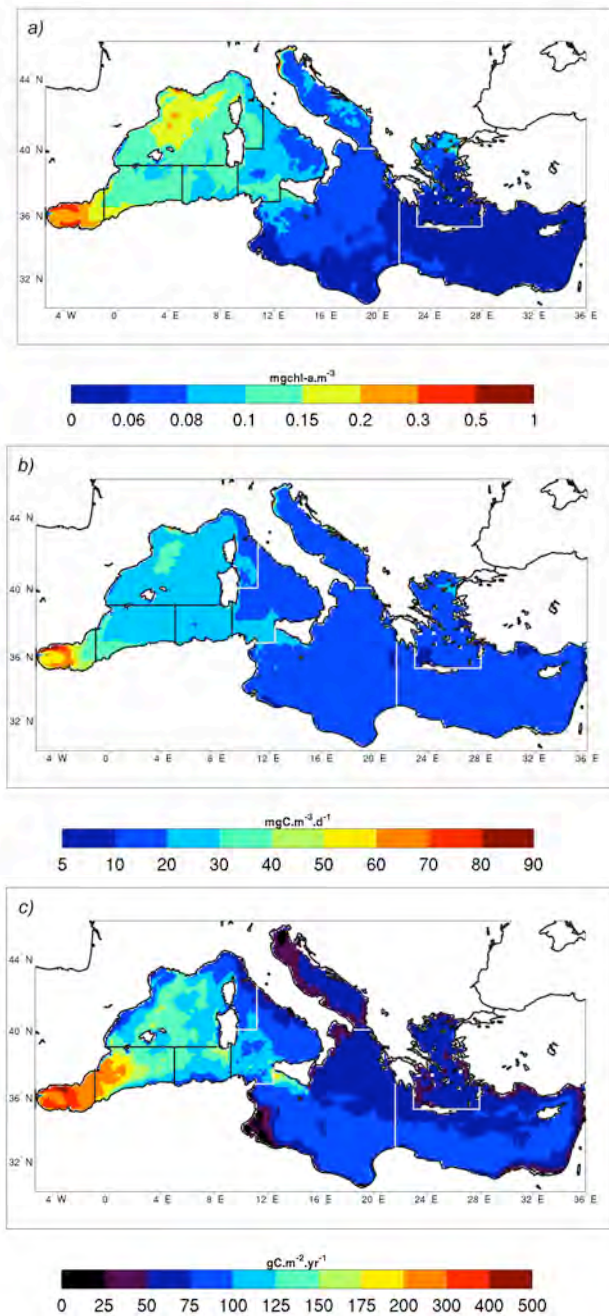


Fig. 8. Model-derived climatology of (a) annual surface chlorophyll concentration ($\text{mg chl-}a \text{ m}^{-3}$); (b) surface net primary production ($\text{mgC m}^{-3} \text{ d}^{-1}$); (c) vertically integrated net primary production ($\text{gC m}^{-2} \text{ yr}^{-1}$).

measured values in excess of $350 \text{ mgC m}^{-2} \text{ d}^{-1}$ in the western area and 150 to $450 \text{ mgC m}^{-2} \text{ d}^{-1}$ in the eastern basin (May–June 1996, Minos Cruise). OPATM-BFM estimates for the same period of the year are $430 \pm 258 \text{ mgC m}^{-2} \text{ d}^{-1}$ and $200 \pm 107 \text{ mgC m}^{-2} \text{ d}^{-1}$, respectively. The seasonal variability (OPATM-BFM REF

column, number in parentheses) is higher in the model than satellite-based estimates.

In the Alboran Sea, which is known to be the most productive MS area (Siokou-Frangou et al., 2010), our model estimates a production rate of $274 \pm 11 \text{ gC m}^{-2} \text{ yr}^{-1}$. Field observations do not cover all seasons; however, a comparison can be made for November 2003, when Macías et al. (2009) reported primary production data characterised by high spatial variability (6 – $644 \text{ mgC m}^{-2} \text{ d}^{-1}$) while our current model estimate is $545 \pm 321 \text{ mgC m}^{-2} \text{ d}^{-1}$.

The elevated production signal from the Alboran Sea propagates into the Algerian region, which generates a spatial gradient that marks the declining influence of the Gibraltar Strait dynamics. The simulated annual budgets for the SWW and SWE areas are 160 ± 8 and $118 \pm 13 \text{ gC m}^{-2} \text{ yr}^{-1}$, respectively. An analysis by Lohrenz et al. (1988) of the Algerian Current (western part) in May period reported values ranging from 299 to $1288 \text{ mgC m}^{-2} \text{ d}^{-1}$, whereas the model average results for the SWW are $570 \pm 233 \text{ mgC m}^{-2} \text{ d}^{-1}$ for May. Moutin and Raimbault (2002) reported an int-NPP rate for the SWE area that was in excess of $450 \text{ mgC m}^{-2} \text{ d}^{-1}$, whereas the model results for the same period are $447 \pm 164 \text{ mgC m}^{-2} \text{ d}^{-1}$.

The difference in int-NPP between the NWM ($116 \text{ gC m}^{-2} \text{ yr}^{-1}$) and SWE ($118 \text{ gC m}^{-2} \text{ yr}^{-1}$) regions is very small, in contrast to surface properties in these regions. Experimental data also do not show a clear gradient in terms of int-NPP (Moutin and Raimbault, 2002; see their Fig. 1). Conan et al. (1998) estimated an int-NPP in the range of 140 – $150 \text{ gC m}^{-2} \text{ yr}^{-1}$ for the years of 1992–1993 (NWM region), whereas other ^{14}C measurements for the Catalan-Balearic region range from $1000 \pm 1 \text{ mgC m}^{-2} \text{ d}^{-1}$ (March period, Moran and Estrada, 2001) to 211 – $249 \text{ mgC m}^{-2} \text{ d}^{-1}$ (October period, Granata et al., 2004). The DYFAMED station measurements presented highly variable int-NPP rates, ranging from 86 to $232 \text{ gC m}^{-2} \text{ yr}^{-1}$ for the 1993–1999 period, with an average of $156 \text{ gC m}^{-2} \text{ yr}^{-1}$ (Marty and Chiavérini, 2002). A high degree of seasonal variability was also obtained in a one-dimensional modelling study for the same area and in other sites across the MS (Allen et al., 2002).

The Tyrrhenian Sea has an intermediate NPP ($92 \pm 5 \text{ gC m}^{-2} \text{ yr}^{-1}$), whereas Moutin and Raimbault (2002) have estimated values between 350 and $450 \text{ mgC m}^{-2} \text{ d}^{-1}$ during the period from May–June (Minos cruise, 1996). The most oligotrophic areas, the Ionian Sea and Levantine region, have been characterised as having very low int-NPP values, 77 ± 4 and $76 \pm 5 \text{ gC m}^{-2} \text{ yr}^{-1}$, respectively. Napolitano et al. (2000) estimated higher int-NPP rates ($97 \text{ gC m}^{-2} \text{ yr}^{-1}$) for the Rhodes gyre area via a one-dimensional model. Between May and June, the REF simulation calculates an int-NPP of $189 \pm 99 \text{ mgC m}^{-2} \text{ d}^{-1}$ for the Ionian Sea, which is within the range that has been measured by Moutin and Raimbault (2002). In the same region, our August int-NPP estimates

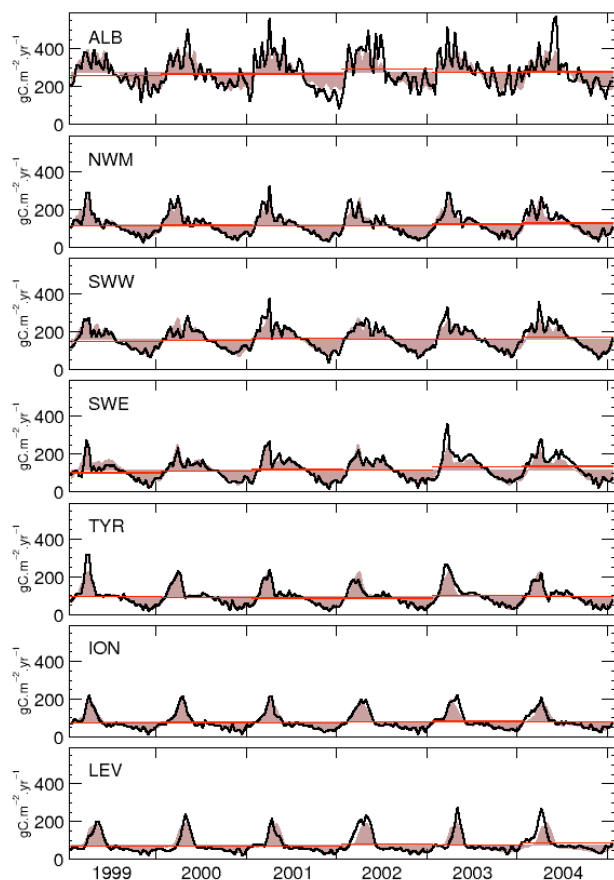


Fig. 9. Temporal series of integrated net primary production ($\text{gC m}^{-2} \text{yr}^{-1}$) averaged for the 7 areas of Fig. 1 (black line); climatological values for the period 1999–2004 (brown shading), and annual averages (red lines).

of $159 \pm 68 \text{ mgC m}^{-2} \text{d}^{-1}$ are in fair agreement with the measured rates of $186 \pm 65 \text{ mgC m}^{-2} \text{d}^{-1}$ (Boldrin et al., 2002). Similar agreement holds for the Levantine region.

The temporal series of int-NPP values from the standard run is shown in Fig. 9. All the regions are characterised by a strong seasonal cycle. As shown in Table 1, the inter-annual variability in annual int-NPP (red lines in Fig. 9) is lower than that of the seasonal cycle (black lines in Fig. 9). In the ALB region, the maxima are spread across the period from January–June. The western and eastern regions differ primarily in the declining phase of int-NPP: in the western regions, the int-NPP winter peak is sustained for a longer period than in the eastern reaches.

Because the light extinction factor adopted in these calculations is characterised by substantial uncertainty, we performed a simulation to evaluate the impact of increasing the extinction factor (k) by 0.01 m^{-1} (around 30 % of minimum value). This analysis demonstrates the sensitivity of the system to k and results in a reduction in int-NPP of

approximately $10 \text{ gC m}^{-2} \text{yr}^{-1}$. Further, the sensitivity of model output to k is largely confined to surface fields.

This test revealed that the belt-like pattern of higher int-NPP, which is evident in the south Ionian and south Levantine regions as depicted in Fig. 8, is sensitive to k because the higher int-NPP rates that are present in the eastern area disappear with a 30 % increase in k (image not shown).

A comparison between different simulations (Table 2), performed with varying ATIs, indicates that the impact of these sources on the annual int-NPP budget amounts to an increase of $3 \text{ gC m}^{-2} \text{yr}^{-1}$ and varies across different sub-basins over a range of $3\text{--}5 \text{ gC m}^{-2} \text{yr}^{-1}$.

4 Discussion

Numerical simulations give a virtual representation of reality which can be sampled at high frequency in both space and time and, therefore, allow us to fully cover and quantify the spatial and temporal variability of the biogeochemical and physical characteristics of pelagic systems and within each of its regions.

According to our basin-scale simulation, the normalised, time-averaged inter-quartile range (IQR) around the median chlorophyll concentration was between 60 % (ALB) and 35 % (SWE) and typically of the order of 45 %, whereas the normalised IQR was between 60 % (ALB) and 45 % (SWE) and typically of the order of 52 % for the int-NPP. These ranges imply that single measurements can rarely provide accurate representations of regional biogeochemical conditions or annual productivity budgets.

Similarly, for all the investigated regions, the instantaneous spatial variability of the int-NPP can exceed a normalised IQR of 100 % at any given moment, which highlights the need of an appropriate spatial sampling frequency.

Satellite-derived information may provide important knowledge about sea surface biogeochemical characteristics; however, our simulations indicate that the correlation between surface productivity and integrated NPP throughout the MS is seasonally variable (Fig. 10). In general, the correlation is higher during winter period (January–February–March) and lower during summer period (July–August–September). This suggests a decoupling of surface and sub-surface dynamics due to stratification in summer. It is worth noting that during spring and winter, the relationship between int-NPP and surface productivity in the MS followed a linear relationship ($r = 0.961$). Conversely, during summer the correlation between int-NPP and surface productivity was negative with lower correlation coefficient ($r = -0.538$).

As already pointed out, the west-east spatial gradient in surface chlorophyll concentrations is also present for NPP rates. This gradient highlights the inaccuracy of treating the MS as a uniform, oligotrophic sea and the importance of accounting for regional differences that are not necessarily seen in surface properties, in particular

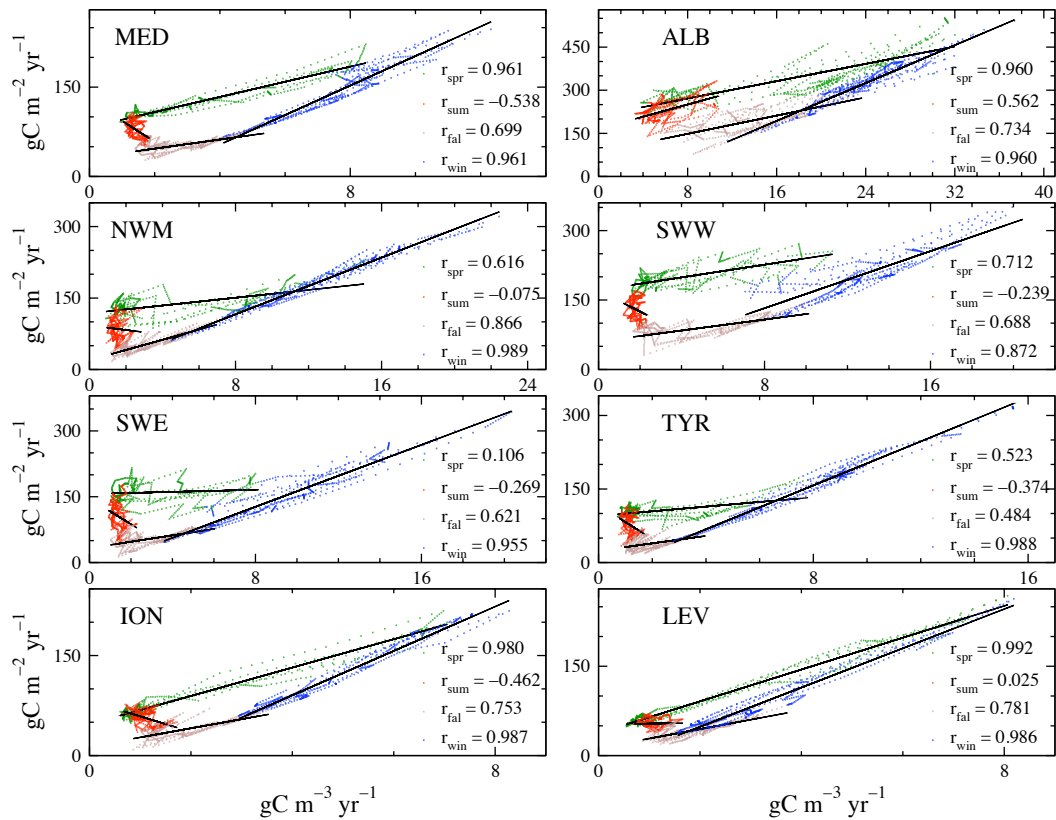


Fig. 10. Scatter plots of integrated ($\text{gC m}^{-2} \text{yr}^{-1}$) versus surface ($\text{gC m}^{-3} \text{yr}^{-1}$) net primary production: each point represents the 10-day regional average in the period 1999–2004 for the MS and the 7 areas defined in Fig. 1. Points are colored according to seasons: winter (blue, January–February–March), spring (green, April–May–June), summer (red, July–August–September) and fall (brown, October–November–December). Black lines represent the linear regressions, whose correlation coefficients r are also shown.

when considering environmental regulations. Specifically, adopting the Nixon classification of trophic regimes (Nixon, 1995), our estimates indicate that, on average, the MS is oligotrophic (int-NPP $< 100 \text{ gC m}^{-2} \text{yr}^{-1}$), however, the western MS, particularly the Alboran Sea area, is mesotrophic (int-NPP between 100 and $300 \text{ gC m}^{-2} \text{yr}^{-1}$), while the eastern region is typically oligotrophic. In contrast to common perceptions, the SWW region appears to be more productive than the NWM region.

Among the bio-provinces introduced by Longhurst (1995) for the Global Ocean we found that the Longhurst model 3 (Lm 3 “subtropical nutrient-limited winter-spring production period”) was the closest to the results of the simulations presented; Lm 3 was indeed associated by Longhurst to the MS. However, this does not imply an homogeneous situation for MS. In fact Longhurst classes are qualitative, and each one encompasses a spectrum of quantitative trends as illustrated by the Longhurst diagrams for each region in the MS, as well as the deep convection area (grid point located in NWM at 5.0625°E – 42.1258°N), given in Fig. 11. From the analysis of the Longhurst diagrams the west-east gradient in chlorophyll accumulation (Fig. 11) is evident. The same

trend is reflected in the int-NPP seasonal cycle (Fig. 11). It is interesting to note that there seems to be no relation between MLD intensity and trophic regime. For example, if we consider the diagram in Fig. 11d (NWM region), and the diagram in Fig. 11g (Levantine Sea), the MLD is similar but with different impact on evolution on chlorophyll stocks and productivity. To improve the descriptive capability of the Longhurst diagrams we added the depth of a reference phosphates concentration ($0.05 \text{ mmol P m}^{-3}$) and the grazing on phytoplankton ($\text{mgC m}^{-2} \text{d}^{-1}$, GRZ). This shows that in the western region the nutricline is shallower than in the eastern region. Another interesting aspect appearing from the diagrams is that, similar to the North Atlantic (Behrenfeld, 2010) the accumulation phase for chlorophyll starts when the int-NPP is decreasing (autumn) indicating that the reduction in grazing (losses) contributes to the increase in biomass accumulation phase. After this initial phase, growth is stimulated by nutrient input from deeper layers leading to a decoupling of production and grazing rates (the first increases, the latter decreases). Therefore during summer and autumn the productivity is controlled by grazing while the spring bloom is fuelled by new nutrient input into the photic zone.

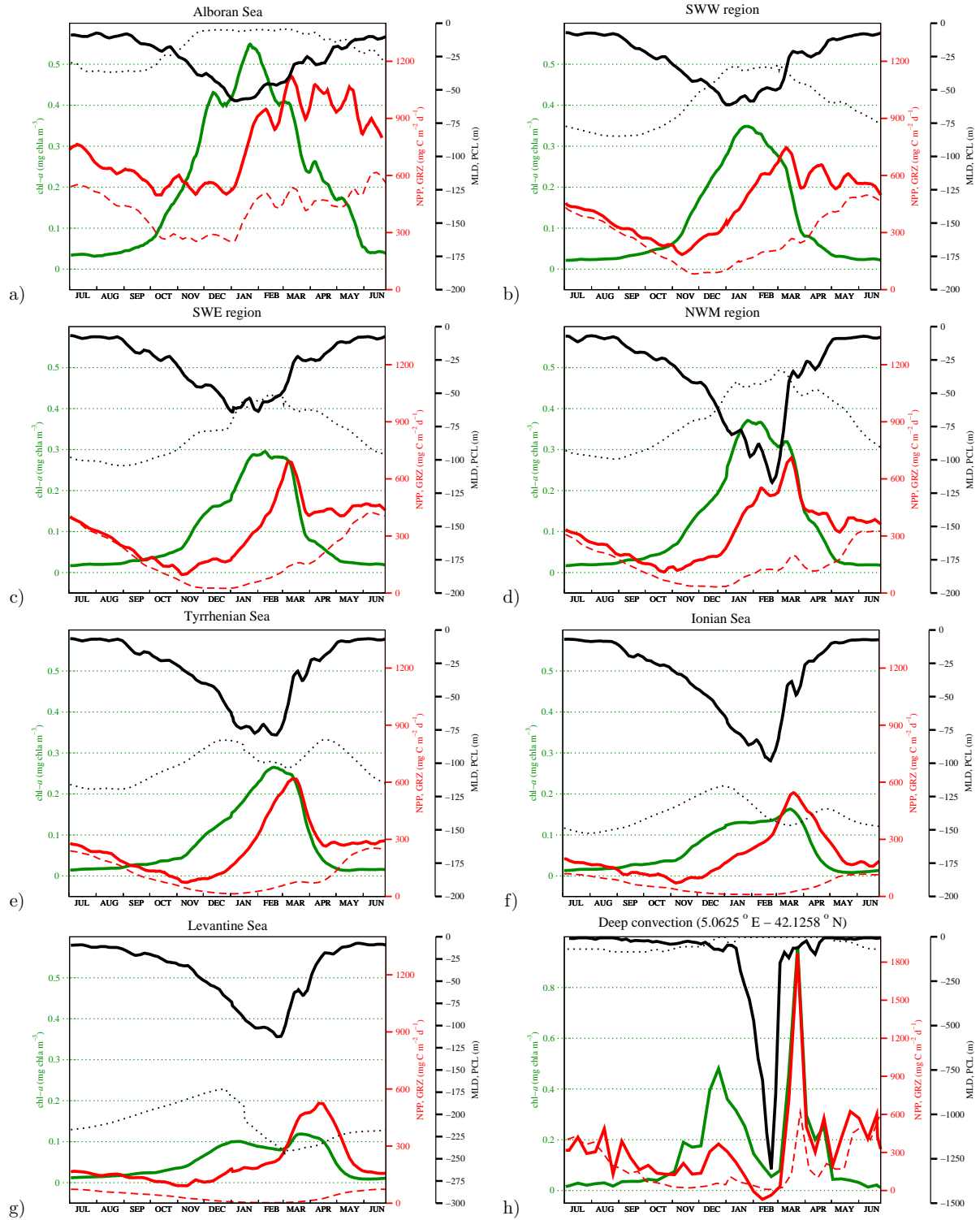


Fig. 11. Longhurst diagrams for the regions considered in the model (a, b, c, d, e, f, g) and the deep convection area (h). Red solid lines represent int-NPP ($\text{mgC m}^{-2} \text{d}^{-1}$) and dashed red lines represent grazing of phytoplankton ($\text{mgC m}^{-2} \text{d}^{-1}$), green solid lines represent surface chlorophyll ($\text{mg chl-}a \text{ m}^{-3}$), black solid lines represent mixed layer depth (m) and black dotted lines represent the depth of the $0.05 \text{ mmol P m}^{-3}$ isophosphate (m). Note the different scale for MLD in panel (g) and (h) and for NPP in panel (h).

The seasonal variability (number in parentheses, Table 1) is higher in the model results than in the satellite data. Such variability, however, is consistent with observations at the DYFAMED site (Marty and Chiavérini, 2002) and time series measurements by Psarra et al. (2000) in the eastern MS. The temporal variability of int-NPP also qualitatively agrees with variability in short wave radiation and wind speed (images not shown); in fact, for both forcings, the seasonal cycle is the strongest component of the signal, whereas the variability of the annual average is very low. The same arguments are valid for the variability of the MLD.

The sensitivity analysis performed indicates that uncertainty in k is associated with a 10 % uncertainty in the estimation of int-NPP. This suggests that even if the present model configuration can be considered an useful tool to estimate the spatial-temporal variability of the variables considered, an increase in our quantitative knowledge of the factors regulating the system is required for more accurate estimates. The impact of ATIs are low in terms of large-scale averaged int-NPP but could be relevant when considering new production.

5 Conclusions

A model based synthesis of the chlorophyll concentrations and net primary production rates in the Mediterranean Sea for the 1999–2004 period is presented in this study. Model simulations illustrate the high spatial and temporal variability of chlorophyll concentrations and integrated NPP, and highlight the importance of considering these variables when performing basin-wide budgets and exploring basin-wide temporal variability.

According to the results obtained, the following summary points can be concluded:

- The model outcomes agree fairly well with prior in situ observations.
- The seasonal cycle signal of the integrated NPP dominates over the inter-annual variability when large scale averages are considered.
- The horizontal averages over selected regions show a clear spatial gradient in NPP and chlorophyll standing stocks from west to east.
- The north-south patterns are different with respect to surface and integrated properties.
- On average the model results are in line with the Longhurst biological domain “*subtropical nutrient-limited winter-spring production period*”.
- Depth of nutricline and grazing rates are important parameters to explain spatial differences between MS regions which are not resolved using the Longhurst classification scheme (Longhurst, 1995).

- The impact of atmospheric and terrestrial inputs on the annual budget of the integrated NPP (new production) is in the range of 3–5 gC m⁻² yr⁻¹.
- Moreover, the impact of a 30 % increase in the extinction factor (k) on the integrated NPP annual budget is approximately 10 gC m⁻² yr⁻¹.

The spatial and temporal variability of simulated chlorophyll and int-NPP ranges suggests that a 3-D model approach constitutes an important tool for exploring seasonal and spatial variability in land-remote oceanic areas, in particular within the context of establishing conservation policies.

Appendix A

Transport equations formulation

The ocean 3-D fields from the MED16 model at 1/16° resolution are horizontally interpolated on a 1/8° resolution grid while the original vertical grid is maintained. In more details, the working meshgrid is based on 1/8° longitudinal scale factors (e_1) and on 1/8° cos(φ) latitudinal scale factor (e_2). The vertical meshgrid (e_3) accounts for 43 vertical z-levels: 13 in the first 200 m depth, 18 between 200 and 2000 m, 12 below 2000 m.

The temporal scheme is explicit forward time scheme for the advection term (A) whereas an implicit time step is adopted for the vertical diffusion (D^v).

In numerical terms, the transport reaction equations are:

$$A = \left[\frac{1}{e_1 e_2 e_3} \left(\frac{\Delta(e_2 e_3 c_i^t u)}{\Delta i} + \frac{\Delta(e_1 e_3 c_i^t v)}{\Delta j} + \frac{\Delta(e_1 e_2 c_i^t w)}{\Delta k} \right) \right] \quad (\text{A1})$$

The advection term A corresponds to the budget of all the fluxes across the boundaries of the cell with index (i longitude, j latitude, k depth) normalized on the cell volume ($e_1 e_2 e_3$).

$$D^v = \left[\frac{1}{e_3} \left(\frac{\Delta}{\Delta k} \left(\frac{k_v}{e_3} \frac{\Delta(c_i^{t+1})}{\Delta k} \right) \right) \right] \quad (\text{A2})$$

where k_v is the vertical eddy diffusivity coefficient and c_i are the concentration at time $t + 1$.

The vertical diffusion term (D^v) is calculated by an implicit forward time scheme to increase the stability, especially in the vertical mixing phase where vertical diffusion coefficient can be very high.

The sinking term S is a vertical flux:

$$S = \left[\frac{1}{e_1 e_2 e_3} \left(\frac{\Delta(e_1 e_2 c_i^t w_s)}{\Delta k} \right) \right] \quad (\text{A3})$$

where w_s is the sinking velocity that is fixed for particulate matter and dependent on nutrient for diatoms and dinoflagellates.

Appendix B

Photosynthesis formulation

The carbon (*C*) fixation, Eq. (B1) and chlorophyll (*chl*) synthesis, Eq. (B2), read:

$$\frac{\partial C}{\partial t} = \text{gpp} - \text{rsp} - \text{exu} - \text{pred}_C \quad (\text{B1})$$

$$\frac{\partial \text{chl}}{\partial t} = f_P^{n,p} \rho_{\text{chl}} (\text{gpp} - \text{rsp} - \text{exu}) - t_{\text{rate}} \text{chl} + \text{chl}_{\text{REL}} - \text{pred}_{\text{chl}} \quad (\text{B2})$$

in particular the gross productivity rate is defined as

$$\text{gpp} = P_m^C f^E f^T f^S C \quad (\text{B3})$$

where P_m^C is the maximum potential uptake, f^T , f^S are the limitations for temperature and silicates (diatoms only), f^E , Eq. (B3), is the limiting factor for photosynthetic available radiation $I(z)$.

$$f^E = \left(1 - e^{-\frac{\alpha^{\text{chl}} I(z) \theta}{P_m^C}} \right) \quad (\text{B4})$$

$$t_{\text{rate}} = \max(p_{\text{sdchl}}(P)(1 - f_P^{n,p}), 0) \quad (\text{B5})$$

$$\text{Chl}_{\text{REL}} = \min(0, \text{gpp} - \text{rsp}) \max(\text{Chl} - p_{\text{qchl}}(P)C, 0) \quad (\text{B6})$$

ρ_{chl} is the rate of chlorophyll synthesis for unit of carbon fixation that regulates the degree of adaptation, expressed by the quota of chlorophyll over carbon θ , to the different light regimes. t_{rate} is the turnover rate based on nutrient stress and Chl_{REL} is a relaxation term toward optimal chlorophyll to carbon ratio ($p_{\text{qchl}}(P)$). f^n and f^p are linear limitation terms, bounded between p_o and 1, based on nutrient to Carbon quota.

$$f^n \rightarrow f^{n,p} = \min(f^n, f^p) \quad (\text{B7})$$

$$f^n = L_{p_o,1} \left(\frac{Q_{\text{NC}}(P) - p_{\text{qnlc}}}{p_{\text{qnRc}}(P) - p_{\text{qnlc}}} \right), \quad (\text{B8})$$

$$f^p = L_{p_o,1} \left(\frac{Q_{\text{PC}}(P) - p_{\text{qplc}}(P)}{p_{\text{qpRc}}(P) - p_{\text{qplc}}(P)} \right)$$

We switched from f^n to $f^{n,p}$ in order to represent phosphorus limitation. A full detailed description of all the biogeochemical model equations and correspondent parameters are included in the Supplement (part 2).

Supplementary material related to this article is available online at:

<http://www.biogeosciences.net/9/217/2012/bg-9-217-2012-supplement.zip>

Acknowledgements. This work was partially funded by projects V.E.C.T.O.R. (VulnErabilità delle Coste e degli ecosistemi marini italiani ai cambiamenti climaTici e loro ruolO nel ciclo del caRbonio mediterraneo; financed by Italian Special Research Fund FISR 2001), EC-FP6 SESAME-IP and Accordo di esecuzione tra CMCC ed OGS.

The simulations were carried out at the CINECA supercomputer centre (Bologna, Italy).

This work was granted access to the HPC resources of IDRIS of CNRS under allocation 2008 (i2008010227) made by GENCI. Atmospheric forcing was provided by ECMWF.

Karine Béranger thanks the Mercator project for support to the MED16 work.

The authors thank Laurent Coppola for providing access to DYFAMED data, and Gianpiero Cossarini for fruitful discussions. Authors thank Maurizio Ribera d'Alcalà and the other anonymous reviewer for their useful comments.

Edited by: C. Klaas

References

- Allen, J. I., Somerfield, P. J., and Siddorn, J.: Primary and bacterial production in the Mediterranean Sea: a modelling study, *J. Marine Syst.*, 33/34, 473–495, 2002.
- Arhonditsis, G. B. and Brett, M. T.: Evaluation of the current state of mechanistic aquatic biogeochemical modelling, *Mar. Ecol.-Prog. Ser.*, 271, 13–26, 2004.
- Azov, I.: The Mediterranean Sea, a marine desert?, *Mar. Pollut. Bull.*, 23, 225–232, 1991.
- Barale, V., Jaquet, J.-M., and Ndiaye, M.: Algal blooming patterns and anomalies in the Mediterranean Sea as derived from SeaWiFS dataset (1998–2003), *Remote Sens. Environ.*, 112, 3300–3313, 2008.
- Barnier, B.: Forcing the Ocean, in: *Ocean Modeling and Parameterization*, edited by: Chassignet, E. P. and Verron, J., NATO Sciences Series, Serie C: Mathematical and Physical Sciences, vol. 516., 45–80, Kluwer Academic Publishers. Printed in the Netherlands, 1998.
- Behrenfeld, M. J.: Abandoning Sverdrup's Critical Depth Hypothesis on phytoplankton blooms: *Ecology*, 91, 977–989, 2010.
- Béranger, K., Mortier, L., Gasparini, G.-P., Gervasio, L., Astraldi, M., and Crépon, M.: The dynamics of the Sicily Strait: A comprehensive study from observations and models, *Deep Sea Res. Pt. II*, 51, 411–440, 2004.
- Béranger, K., Mortier, L., and Crépon, M.: Seasonal variability of water transport through the Straits of Gibraltar, Sicily and Corsica, derived from a high-resolution model of the Mediterranean circulation, *Prog. Oceanogr.*, 66, 341–364, 2005.
- Béranger, K., Testor, P., and Crépon, M.: Modelling water mass formation in the Gulf of Lion (Mediterranean Sea), *WORKSHOP CIESM Monograph n°38 on Dynamics of Mediterranean deep waters*, F. Briand Eds., Monaco, 2009.
- Béranger, K., Drillet, Y., Houssais, M.-N., Testor, P., Bourdallé-Badie, R., Alhammoud, B., Bozec, A., Mortier, L., Bouruet-Aubertot, P., and Crépon, M.: Impact of the spatial distribution of the atmospheric forcing on water mass formation

- in the Mediterranean Sea, *J. Geophys. Res.*, 115, C12041, doi:10.1029/2009JC005648, 2010.
- Bergametti, G., Remoudaki, E., Losno, R., Steiner, E., and Chatenet, B.: Source, transport and deposition of atmospheric Phosphorus over the northwestern Mediterranean, *J. Atmos. Chem.*, 14, 501–513, 1992.
- Béthoux, J. P., Morin, P., Chaumery, C., Connan, O., Gentili, B., and Ruiz-Pino, D.: Nutrients in the Mediterranean Sea, mass balance and statistical analysis of concentrations with respect to environmental change, *Mar. Chem.*, 63, 155–169, 1998.
- Bianchi, C. N. and Morri, C.: Marine Biodiversity of the Mediterranean Sea: Situation, Problems and Prospects for Future Research, *Mar. Pollut. Bull.*, 40, 367–376, 2000.
- Blanke, B. and Delecluse, P.: Variability of the tropical Atlantic ocean simulated by a general circulation model with two different mixed layer physics, *J. Phys. Oceanogr.*, 23, 1363–1388, 1993.
- Boldrin, A., Miserocchi, S., Rabitti, S., Turchetto, M. M., Balboni, V., and Socal, G.: Particulate matter in the southern Adriatic and Ionian Sea: characterization and downward fluxes, *J. Marine Syst.*, 33/34, 389–410, 2002.
- Bosc, E., Bricaud, A., and Antoine, D.: Seasonal and inter-annual variability in algal biomass and primary production in the Mediterranean Sea, as derived from 4 years of SeaWiFS observations, *Global Biogeochem. Cy.*, 18, GB1005, doi:10.1029/2003GB002034, 2004.
- Brankart, J.-M. and Brasseur, P.: The general circulation in the Mediterranean Sea: a climatological approach, *J. Mar. Syst.*, 18, 41–70, 1998.
- Caddy, J. F., Refk, R., and Do-Chi, T.: Productivity estimates for the Mediterranean: evidence of accelerating ecological change, *Ocean Coastal Manage.*, 26, 1–18, 1995.
- Colella, S.: La produzione primaria nel Mar Mediterraneo da satellite: sviluppo di un modello regionale e sua applicazione ai dati SeaWiFS, MODIS e MERIS, Phd Thesis, Università Federico II Napoli, 162 pp., 2006.
- Coll, M., Piroddi, C., Steenbeek, J., Kaschner, K., Ben Rais Lasram, F., Aguzzi, J., Ballesteros, E., Bianchi, C. N., Corbera, J., Dailianis, T., Danovaro, R., Estrada, M., Frogli, C., Galil, B. S., Gasol, J. M., Gertwagen, R., Gil, J., Guilhaumon, F., Kesner-Reyes, K., Kitsos, M.-S., Koukouras, A., Lampadariou, N., Laxamana, E., López-Fé de la Cuadra, C. M., Lotze, H. K., Martin, D., Mouillot, D., Oro, D., Raicevich, S., Rius-Barile, J., Saiz-Salinas, J. I., San Vicente, C., Somot, S., Templado, J., Turon, X., Vafidis, D., Villanueva, R., and Voultsiadou, E.: The Biodiversity of the Mediterranean Sea: Estimates, Patterns, and Threats, *PLoS One*, 5, 1–34, 2010.
- Conan, P., Pujó-Pay, M., Raimbault, M., and Leveau, M.: Hydrological and biological variability of the Gulf of Lions. II Productivity on the inner edge of the North Mediterranean Current, *Oceanol. Acta*, 21, 767–782, 1998.
- Cornell, S., Rendell, A., and Jickells, T.: Atmospheric inputs of dissolved organic Nitrogen to the oceans, *Nature*, 376, 243–246, 1995.
- Crise, A., Allen, J. I., Baretta, J., Crispi, G., Mosetti, R., and Solidoro, C.: The Mediterranean pelagic ecosystem response to physical forcing, *Prog. Oceanogr.*, 44, 219–243, 1999.
- Crise, A., Solidoro, C., and Tomini, I.: Preparation of initial conditions for the coupled model OGCM and initial parameters setting, MFSTEP report WP11, subtask 11310, 2003.
- Crispi, G., Crise, A., and Mauri, E.: A seasonal three-dimensional study of the nitrogen cycle in the Mediterranean Sea: Part II. Verification of the energy constrained trophic model, *J. Marine Syst.*, 20, 357–379, 1999.
- Crispi, G., Mosetti, R., Solidoro, C., and Crise, A.: Nutrient cycling in Mediterranean basins: the role of the biological pump in the trophic regime, *Ecol. Model.*, 138, 101–114, 2001.
- Crispi, G., Crise, A., and Solidoro, C.: Coupled Mediterranean eco-model of the Phosphorus and Nitrogen cycles, *J. Marine Syst.*, 33/34, 497–521, 2002.
- D’Ortenzio, F. and Ribera d’Alcalà, M.: On the trophic regimes of the Mediterranean Sea: a satellite analysis, *Biogeosciences*, 6, 139–148, doi:10.5194/bg-6-139-2009, 2009.
- D’Ortenzio, F., Iudicone, D., de Boyer Montegut, C., Testor, P., Antoine, D., Marullo, S., Santoleri, R., and Madec G.: Seasonal variability of the mixed layer depth in the Mediterranean Sea as derived from in situ profiles, *Geophys. Res. Lett.*, 32, L12605, doi:10.1029/2005GL022463, 2005.
- Flynn, K. J.: A mechanistic model for describing dynamic multi-nutrient, light, temperature interactions in phytoplankton, *J. Plankton Res.*, 23, 977–997, 2001.
- Follows, M. J., Dutkiewicz, S., Grant, S., and Chisholm, S. W.: Emergent Biogeography of Microbial Communities in a Model Ocean, *Science*, 315, 1843–1846, 2007.
- Foujols, M.-A., Lévy, M., Aumont, O., Madec, G.: OPA 8.1 Tracer Model Reference Manual, Institut Pierre Simon Laplace, 39 pp., 2000.
- Geider, R. J., MacIntyre, H. L., and Kana, T. M.: Dynamic model of phytoplankton growth and acclimation: responses of the balanced growth rate and the chlorophyll *a*: Carbon ratio to light, nutrient-limitation and temperature, *Mar. Ecol.-Prog. Ser.*, 148, 187–200, 1997.
- Granata, T. C., Estrada, M., Zika, U., and Merry, C.: Evidence for enhanced primary production resulting from relative vorticity induced upwelling in the Catalan Current, *Sci. Mar.*, 68, 113–119, 2004.
- Guerzoni, S., Chester, R., Dulac, F., Herut, B., Loÿe-Pilot, M.-D., Measures, C., Migon, C., Molinaroli, E., Moulin, C., Rossini, P., Saydam, C., Soudine, A., and Ziveri, P.: The role of atmospheric deposition in the biogeochemistry of the Mediterranean Sea, *Prog. Oceanogr.*, 44, 147–190, 1999.
- Herut, B. and Krom, M.: Atmospheric input of nutrients and dust to the SE Mediterranean, in: *The Impact of Desert Dust Across the Mediterranean*, edited by: Guerzoni, S. and Chester, R., Kluwer Acad., Norwell, Mass., 349–358, 1996.
- Jolliff, J. K., Kindle, J. C., Shulman, I., Penta, B., Friedrichs, M. A. M., Helber, R., and Arnone, R. A.: Summary diagrams for coupled hydrodynamic-ecosystem model skill assessment, *J. Marine Syst.*, 76, 64–82, 2009.
- Krom, M. D., Kress, N., Brenner, S., and Gordon, L. I.: Phosphorus limitation of primary production in the eastern Mediterranean Sea, *Limnol. Oceanogr.*, 36, 424–432, 1991.
- Lazzari, P., Teruzzi, A., Salon, S., Campagna, S., Calonaci, C., Colella, S., Tonani, M., and Crise, A.: Pre-operational short-term forecasts for the Mediterranean Sea biogeochemistry, *Ocean Sci.*, 6, 25–39, 2010, <http://www.ocean-sci.net/6/25/2010/>.
- Le Quéré, C., Takahashi, T., Buitenhuis, E. T., Rödenbeck, C., and

- Sutherland, S. C.: Impact of climate change and variability on the global oceanic sink of CO₂, *Global Biogeochem. Cy.*, 24, GB4007, doi:10.1029/2009GB003599, 2010.
- Löye-Pilot, M. D., Martin, J. M., and Morelli, J.: Atmospheric input of inorganic Nitrogen to the western Mediterranean, *Biogeochem.*, 9, 117–134, 1990.
- Lohrenz, S. E., Wiesenburg, D. A., DePalma, I. P., Johnson K. S., and Gustafson D. E.: Inter-relationship among primary production, chlorophyll, and environmental conditions in frontal regions of the western Mediterranean Sea, *Deep-Sea Res.*, 35, 793–810, 1988.
- Longhurst, A. R.: Seasonal cycles of pelagic production and consumption, *Prog. Oceanogr.*, 36, 77–167, 1995.
- Ludwig, W., Dumont, E., Meybeck, M., and Heussner, S.: River discharges of water and nutrients to the Mediterranean and Black Sea: Major drivers for ecosystem changes during past and future decades?, *Prog. Oceanogr.*, 80, 199–217, 2009.
- Macías, D., Navarro, G., Bartual, A., Echevarría, F., and Huertas, I. E.: Primary production in the Strait of Gibraltar: Carbon fixation rates in relation to hydrodynamic and phytoplankton dynamics, *Estuar. Coast. Shelf S.*, 83, 115–264, 2009.
- Madec, G., Delecluse, P., Imbard, M., and Lévy, C.: OPA, release 8, Ocean General Circulation reference manual, Technical report 96/xx, LODYC/IPSL, France, February, 1997.
- Mann, K. H. and Lazier, J. R. N.: *Dynamics of Marine Ecosystems*, Blackwell Publishing, 496 pp., 2006.
- Marty, J. C. and Chiavérini, J.: Seasonal and interannual variations in phytoplankton production at the DYFAMED time-series station (1991–1999), *Deep-Sea Res. Pt. II*, 49, 2017–2030, 2002.
- Morán, X. A. G. and Estrada, M.: Short term variability of photosynthetic parameters and particulate and dissolved primary production in the Alboran Sea (SW Mediterranean), *Mar. Ecol.-Prog. Ser.*, 212, 53–67, 2001.
- Morel, A. and Gentili, B.: The dissolved yellow substance and the shades of blue in the Mediterranean Sea, *Biogeosciences*, 6, 2625–2636, doi:10.5194/bg-6-2625-2009, 2009.
- Moutin, T. and Raimbault, P.: Primary production, Carbon export and nutrients availability in western and eastern Mediterranean Sea in early summer 1996 (MINOS cruise), *J. Marine Syst.*, 33/34, 273–288, 2002.
- Napolitano, E., Oguz, T., Malanotte-Rizzoli, P., Yilmaz, A., and Sansone, E.: Simulations of biological production in the Rhodes and Ionian basins of the eastern Mediterranean, *J. Marine Syst.*, 24, 277–298, 2000.
- Nixon, S. W.: Coastal marine eutrophication: a definition, social causes, and future concerns, *Ophelia*, 41, 199–219, 1995.
- Pinardi, N. and Masetti, E.: Variability of the large scale general circulation of the Mediterranean Sea observations and modelling: a review, *Palaeogeogr. Palaeoclimatol.*, 158, 153–173, 2000.
- Psarra, S., Tselepides, A., and Ignatiades, L.: Primary production in the oligotrophic Cretan Sea (NE Mediterranean): seasonal and interannual variability, *Prog. Oceanogr.*, 46, 187–204, 2000.
- Pugnetti, A., Camatti, E., Mangoni, O., Morabito, G., Oggioni, A., and Saggiomo, V.: Phytoplankton production in Italian freshwater and marine ecosystems: state of the art and perspectives, *Chem. Ecol.*, 22, S49–S69, 2006.
- Reynaud, T., LeGrand, P., Mercier, H., and Barnier, B.: A new analysis of hydrographic data in the Atlantic and its application to an inverse modelling study, *International WOCE Newsletter*, 32, 29–31, 1998.
- Ribera d'Alcalà, M., Civitarese, G., Conversano, F., and Lavezza, R.: Nutrient ratios and fluxes hint at overlooked processes in the Mediterranean Sea, *J. Geophys. Res.*, 108, 8106, doi:10.1029/2002JC001650, 2003.
- Riley, G. A.: Transparency-chlorophyll relations, *Limnol. Oceanogr.*, 20, 150–152, 1975.
- Robarts, D. R., Zohary, T., Waiser, M. J., and Yacobi, Y. Z.: Bacterial abundance, biomass, and production in relation to phytoplankton biomass in the Levantine Basin of the southeastern Mediterranean Sea, *Mar. Ecol.-Prog. Ser.*, 137, 273–281, 1996.
- Sarmiento, J. L. and Gruber, N.: *Ocean Biogeochemical Dynamics*, PUP, 526 pp., 2006.
- Siokou-Frangou, I., Christaki, U., Mazzocchi, M. G., Montresor, M., Ribera d'Alcalá, M., Vaqué, D., and Zingone, A.: Plankton in the open Mediterranean Sea: a review, *Biogeosciences*, 7, 1543–1586, doi:10.5194/bg-7-1543-2010, 2010.
- Sournia, A.: La production primaire planctonique en Méditerranée: Essai de mise à jour. *Bull. Etude Commun. Méditer.*, 5, 1–128, 1973.
- Thingstad, T. F. and Rassoulzadegan, F.: Nutrient limitations, microbial food webs, and “biological C-pumps”: suggested interactions in a P-limited Mediterranean, *Mar. Ecol.-Prog. Ser.*, 117, 299–306, 1995.
- Turley, C. M., Bianchi, M., Christaki, U., Conan, P., Harris, J. R. W., Psarra, S., Ruddy, G., Stutt, E. D., Tselepides, A., and Van Wambeke, F.: Relationship between primary producers and bacteria in oligotrophic sea: the Mediterranean and biogeochemical implication, *Mar. Ecol.-Prog. Ser.*, 193, 11–18, 2000.
- Uppala, S. M., Kallberg, P. W., Simmons, A. J., Andrae, U., da Costa Bechtold, V., Fiorino, M., Gibson, J. K., Haseler, J., Hernandez, A., Kelly, G. A., Li, X., Onogi, K., Saarinen, S., Sokka, N., Allan, R. P., Andersson, E., Arpe, K., Balmaseda, M. A., Beljaars, A. C. M., van de Berg, L., Bidlot, J., Bormann, N., Caires, S., Chevallier, F., Dethof, A., Dragosavac, M., Fisher, M., Fuentes, M., Hagemann, S., Hólm, E., Hoskins, B. J., Isaksen, I., Janssen, P. A. E. M., Jenne, R., McNally, A. P., Mahfouf, J.-F., Morcrette, J.-J., Rayner, N. A., Saunders, R. W., Simon, P., Sterl, A., Trenberth, K. E., Untch, A., Vasiljevic, D., Viterbo, P., and Woollen, J.: The ERA-40 re-analysis, *Quart. J. R. Meteorol. Soc.*, 131, 2961–3012, 2005.
- Vichi, M., Pinardi, N., and Masina, S.: A generalized model of pelagic biogeochemistry for the global ocean ecosystem, Part I: Theory, *J. Marine Syst.*, 64, 89–109, 2007a.
- Vichi, M., Masina, S., Navarra, A.: A generalized model of pelagic biogeochemistry for the global ocean ecosystem, Part II: Numerical simulations, *J. Marine Syst.*, 64, 110–134, 2007b.
- Volpe, G., Santoleri, R., Vellucci, V., Ribera d'Alcalà, M., Marullo, S., and D'Ortenzio, F.: The colour of the Mediterranean Sea: Global versus regional bio-optical algorithms evaluation and implication for satellite chlorophyll estimates, *Remote Sens. Environ.*, 107, 625–638, 2007.