

**PLATE 3**

**Seismic Stratigraphic Atlas of the Ross Sea, Antarctica**  
**DSDP Site 270**

**Seismic scale:**  
 Horizontal: 1:100,000  
 Vertical: 10 cm/s

**Compiled under the direction of:**  
 Giuliano Brancolini (OGS).

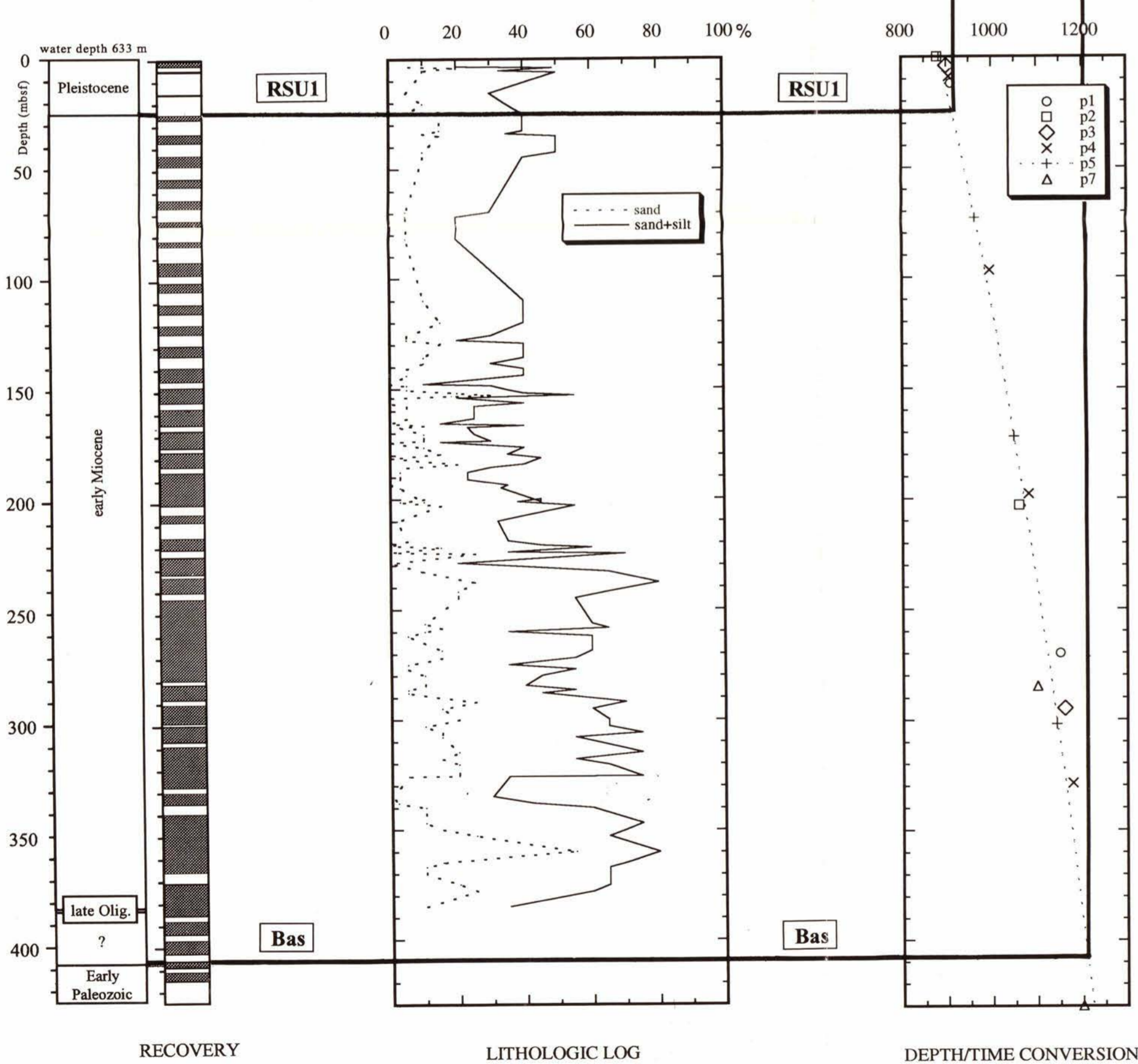
**Authors:**  
 C. De Cillia, L. De Santis and A. Marchetti (OGS)

**Drilling data from:**  
 Hayes, Frakes et al., 1975; McDougall, 1977; Steinhilff and Webb, 1987.

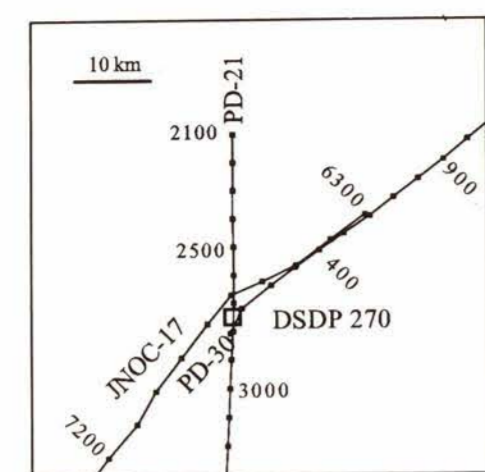
**Seismic data contribution:**

Organization (Country)	Seismic Source	Receiver	Processing
JNOC (Japan)	Airgun array 9.2 liter	600 m 24 channel	Stack
Rice Univ. (USA)	2 water guns 2.46 liter	1 channel	50-140 Hz filter

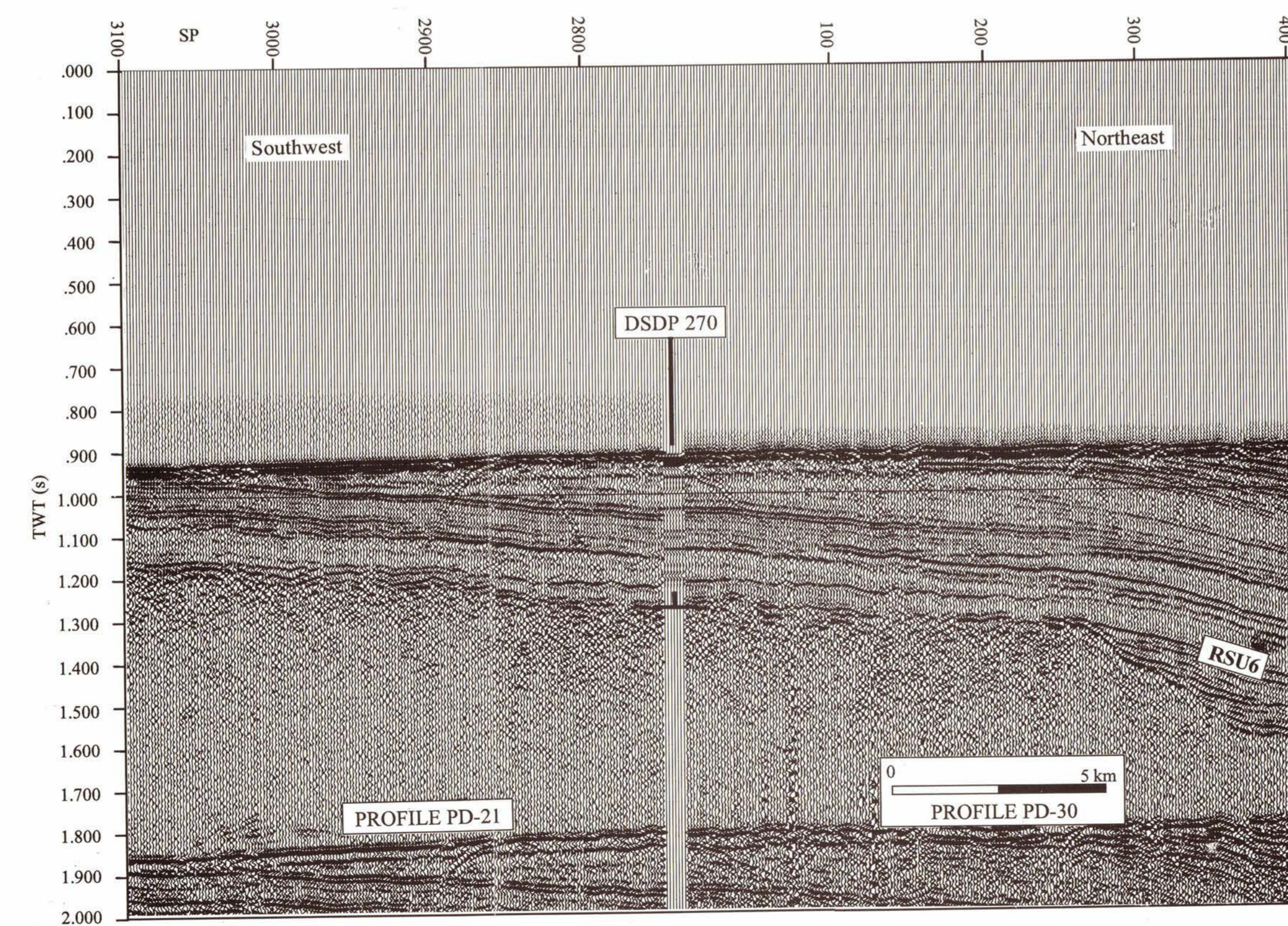
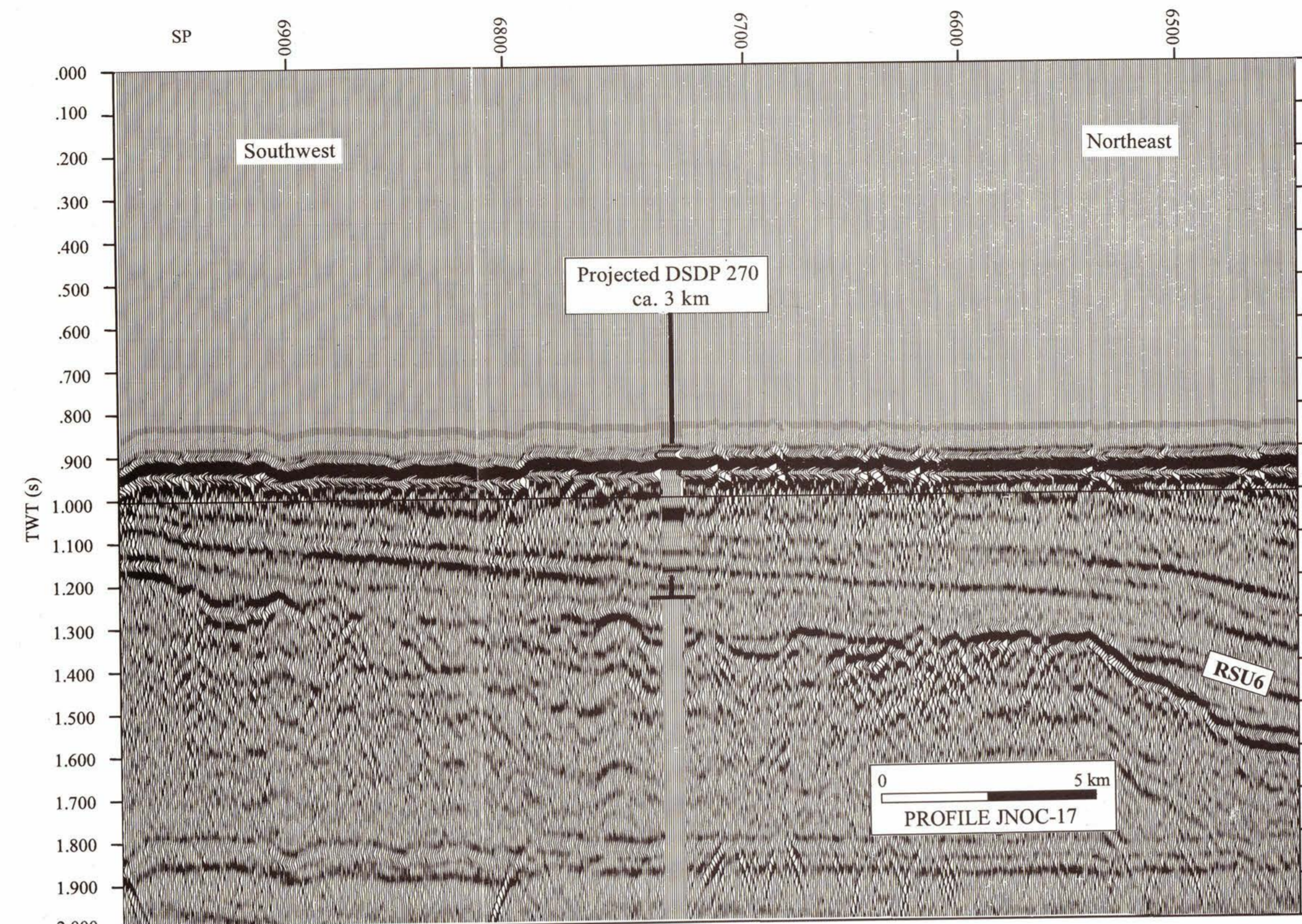
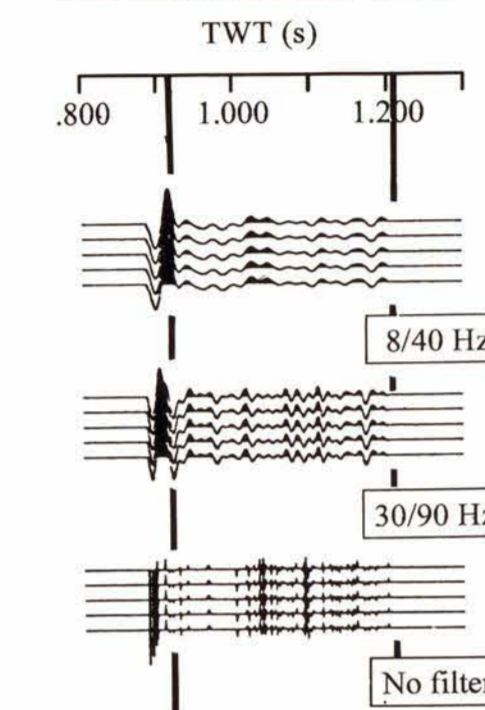
From: ANTOSTRAT Project, Seismic Stratigraphic Atlas of the Ross Sea, Antarctica, in *Geology and Seismic Stratigraphy of the Antarctic Margin, Antarctic Research Series*, vol. 68, edited by A.K. Cooper, P.F. Barker, and G. Brancolini, AGU, Washington, D.C., 1995. See Atlas text for more information about the drilling and seismic correlations.



**SEISMIC PROFILES LOCATION**



**SYNTHETIC SEISMOGRAM**



**Seismic Stratigraphic Atlas of the Ross Sea, Antarctica**  
**DSDP Site 272**

**Seismic scale:**  
 Horizontal: 1:100,000  
 Vertical: 10 cm/s

**Compiled under the direction of:**  
 Giuliano Brancolini (OGS).

**Authors:**  
 C. De Cillia, L. De Santis and A. Marchetti (OGS)

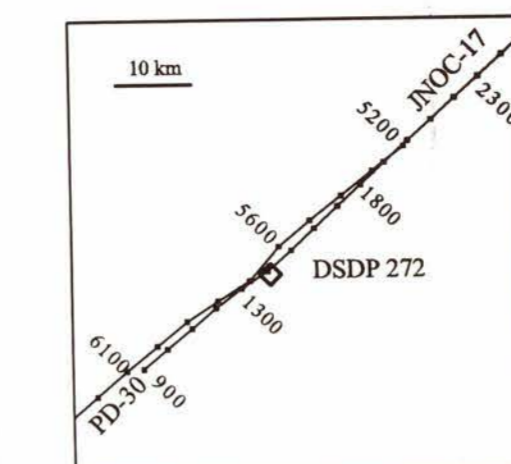
**Drilling data from:**  
 Hayes, Frakes et al., 1975; Savage and Ciesielski, 1983; Leckie and Webb, 1986.

**Seismic data contribution:**

Organization (Country)	Seismic Source	Receiver	Processing
JNOC (Japan)	Airgun array 9.2 liter	600 m 24 channel	Stack
Rice Univ. (USA)	2 water guns 2.46 liter	1 channel	50-140 Hz filter

From: ANTOSTRAT Project, Seismic Stratigraphic Atlas of the Ross Sea, Antarctica, in *Geology and Seismic Stratigraphy of the Antarctic Margin, Antarctic Research Series*, vol. 68, edited by A.K. Cooper, P.F. Barker, and G. Brancolini, AGU, Washington, D.C., 1995. See Atlas text for more information about the drilling and seismic correlations.

**SEISMIC PROFILES LOCATION**



**SYNTHETIC SEISMOGRAM**

