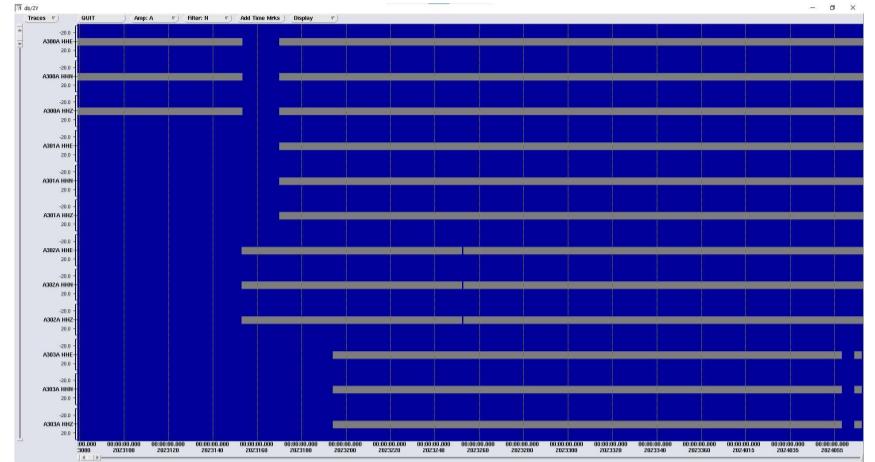


Map of the OGS 2Y seismic network:
 A300A 45,82N 13,13E Muzzana del Turgnano (UD)
 A301A 45,62N 12,62E S. Dona' di Piave (VE)
 A302A 45,63N 11,97E Resana (TV)
 A303A 45,34N 12,32E Lido di Venezia (VE)

Data Acquisition

The front-end data acquisition system is implemented with Earthworm; then data is fed into an Antelope system for storage and analysis. Export to EIDA through a SeedLink server.



Database coverage starting from March 2023



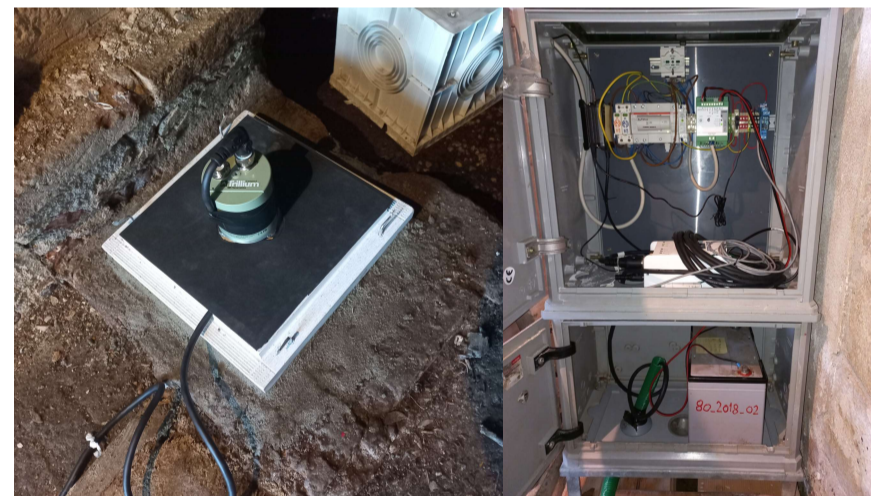
A300A
 Nanometrics Centaur
 Trillium 120
 Building
 Alluvial deposits



A301A
 Nanometrics Centaur
 Trillium 120
 Urban free field
 Lacustrine deposits

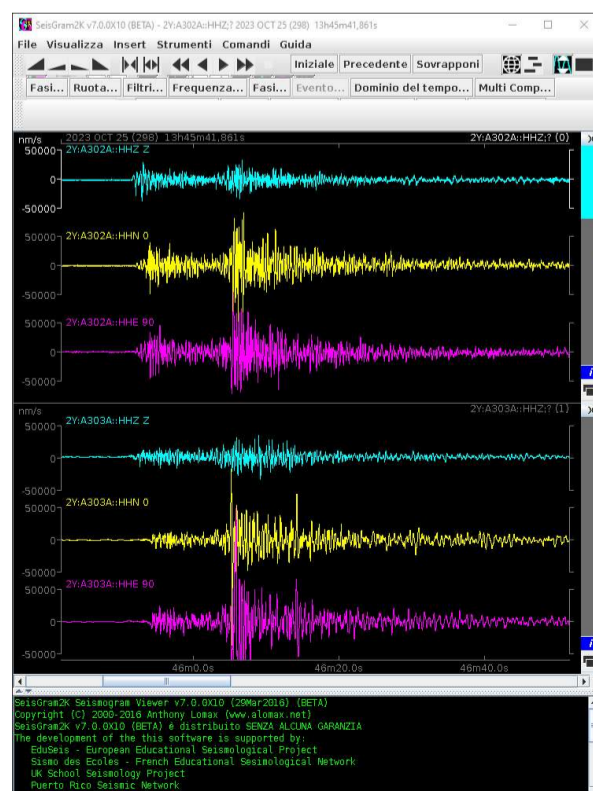


A302A
 Nanometrics Centaur
 Trillium 120
 Building
 Alluvial deposit



A303A
 Nanometrics Centaur
 Trillium 120
 Tunnel
 Sand deposit

ML = 4,4
 Δ = 100km



REFERENCES

<https://rts.crs.ogs.it/>

<http://www.ce3rn.eu/>

Bragato, P. L., Comelli, P., Saraò, A., Zuliani, D., Moratto, L., Poggi, V., Rossi, G., Scaini, C., Sugan, M., Barnaba, C., Bernardi, P., Bertoni, M., Bressan, G., Compagno, A., Del Negro, E., Di Bartolomeo, P., Fabris, P., Garbin, M., Grossi, M., Magrin, A., Magrin, E., Pesaresi, D., Petrovic, B., Plasencia Linares, M. P., Romanelli, M., Snidarcig, A., Tunini, L., Urban, S., Venturini, E., and Parolai, S.: **The OGS–Northeastern Italy Seismic and Deformation Network: Current Status and Outlook**, Seismol. Res. Lett., XX, 1-13, <https://doi.org/10.1785/0220200372>, 2021.