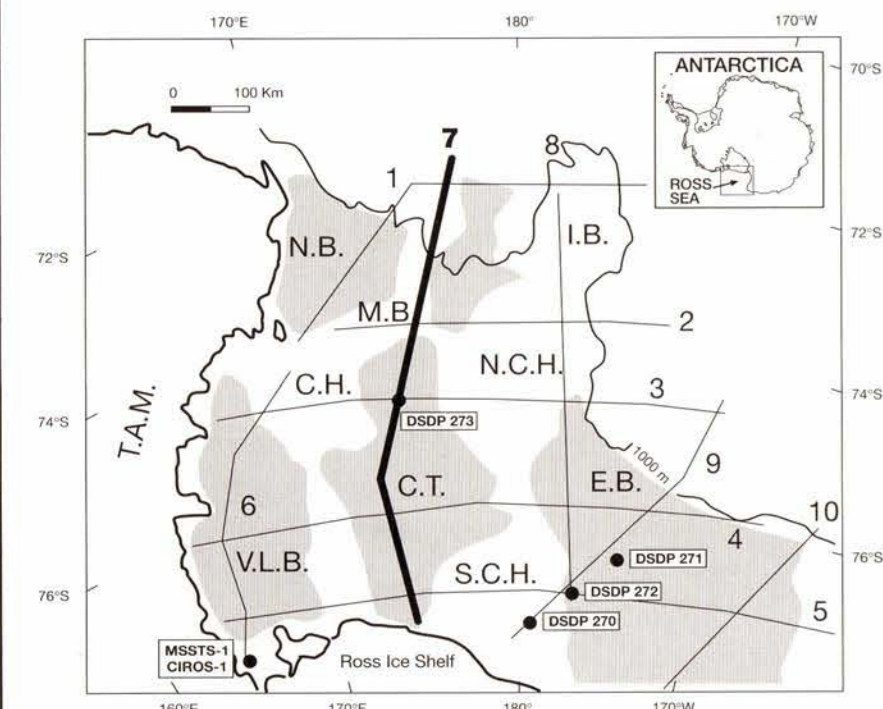


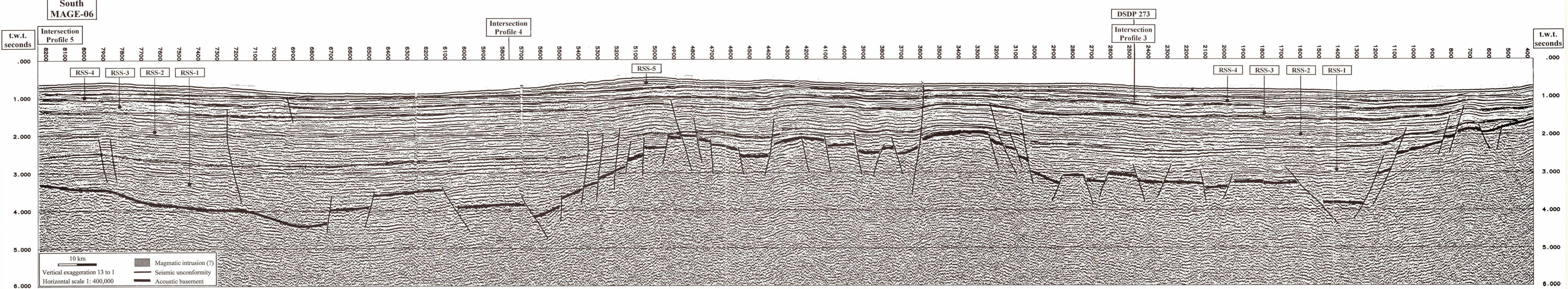
Seismic Stratigraphic Atlas of the Ross Sea, Antarctica  
**Seismic Profile 7**



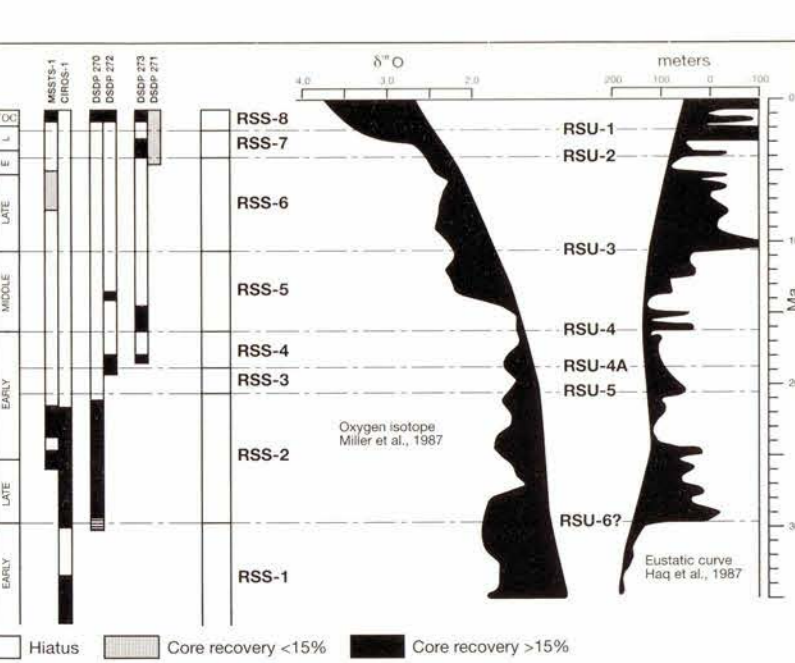
**Legend:**  
 Main structural basins  
 Drill site location

T.A.M.: Transantarctic Mountains, V.L.B.: Victoria Land basin, N.B.: Northern basin, M.B.: Mawson Bank, C.H.: Coulman high, C.T.: Central trough, I.B.: Iselin Bank, N.C.H.: northern Central high, S.C.H.: southern Central high, E.B.: Eastern basin. 1000 m water depth contour is shown.

Seismic line	Organization (Country)	Source	Receiver	Processing
MAGE-06	MAGE (Russia)	Airgun array 10 liner	2400 m 24 channel	Unmigrated stack
MAGE-14	MAGE (Russia)	Airgun array 10 liner	2400 m 24 channel	Unmigrated stack



**Correlation Chart of Ross Sea Seismic Sequences**  
 From Brancolini et al. [this volume]



**Compilers:**  
 G. Brancolini, M. Busetti, L. De Santis (OGS),  
 I. Zayatz (MAGE), A. K. Cooper (USGS)

From: ANTOSTRAT Project, Seismic Stratigraphic Atlas of the Ross Sea, Antarctica, in *Geology and Seismic Stratigraphy of the Antarctic Margin*, Antarctic Research Series, vol. 68, edited by A.K. Cooper, P.F. Barker, and G. Brancolini, AGU, Washington, D.C., 1995. See plate 2 for trackline position. See Atlas text for more information about the seismic profile and the ages of the seismic sequences.

